



2015 Report to the Community

A full-page background photograph of a serene landscape at sunset. A calm lake in the foreground reflects the sky and the surrounding scenery. On the opposite shore, a row of houses with dark roofs is nestled among trees with vibrant autumn foliage in shades of orange, yellow, and red. The sky is filled with soft, colorful clouds in hues of orange, pink, and blue. The overall mood is peaceful and picturesque.

LOVE
PLACE

2016 Board of Directors

| | |
|----------------------------|---|
| President | Kirsten Langhorne, Co-Founder, Langhorne Custom Homes, Lansdowne |
| Vice President | Kate Armfield, Senior Vice President and Principal, AHT Insurance, Middleburg |
| Treasurer | Sandra Atkins, Chief Financial Officer, Focus Wealth Management, Ltd., Middleburg |
| Assistant Treasurer | Sohaib Tayyab, CPA, CVA, MBA, and Principal, AGTA Group, Leesburg |
| Secretary | Susan Webb, Retired Legal Assistant, Tax Exempt Corporations, Delaplane Angela Bender, President, AMJ Financial, Leesburg Andrew R. Bishop, Sports Medicine & Orthopedic Surgeon, Middleburg Matt Durham, President and Head of Analyst Relations, SAP Software, Sterling David Hathaway, Vice President and Partner Application Development and Innovation, IBM Global Business Services Public Sector, Ashburn Andy Johnston, Grant Officer, PATH Foundation, Leesburg Teresa Minchew, Real Estate, History, Community Volunteer, Leesburg Connie Moore, International Marketing and Information Technology, Waterford |
| Executive Director | Amy E. Owen |
| Associate Director | Caroline Toye |

Professional Advisory Committee

David DeJarnett, Business, Estate & Tax Law, Bowles Rice LLP, Winchester, VA and Martinsburg, WV
Tom Wiseman, President, Wiseman & Associates, Middleburg, VA
John Wolff, AIF, CFP, CLU, ChFC CEO and Managing Director, Capital Fiduciary Services, Leesburg, VA

Table of Contents

| | |
|---|-------|
| Your Vision. Your Fund. Your Legacy | 2-3 |
| Donor Advised Fund vs. Private Foundation | 4 |
| F.A.Q. About Donor Advised Funds | 5 |
| Our 2015 Work | 6-7 |
| 2015 Financial Snapshot | 8-9 |
| Charitable Funds | 10-11 |
| Grantmaking Funds | 12-13 |
| 2015 Community Philanthropists | 14-20 |

LOVE OF PLACE

One of the most common questions the staff and Board of the Community Foundation receives is, “What *is* a community foundation?”

It is never easy to sum up the breadth and scope of our work. We hope this *2015 Report to the Community* offers a helpful summary.

There is one common denominator shared by every person who supports the Community Foundation—it is love of place.

It is love of the Loudoun and Fauquier community that connects us to the people we care about. It is love of the impressive countryside that renews us. It is love of the organizations improving our lives.

By being a supporter of our core mission—building local, everlasting endowment as well as current community philanthropy—our donors find a way to tangibly express a love of place. What they give to the Community Foundation, they give to their communities, forever.

Our enduring vision is the great beauty of the Community Foundation. What we collectively build today, will be here long after we all are gone. It is the concept of perpetuity, of being “forever,” that makes a community foundation a unique asset within its footprint. Our children—and children of our children—will continue to benefit from what has been generously given over this past year and since our founding in 1999.

We hope you’ll continue to join us by building upon our love of our home. The places and people of Loudoun and Northern Fauquier can forever benefit from your vision of our wonderful and unique community. After all, “there’s no place like home.”



Kirsten Langhorne
President



Amy Owen
Executive Director

Your Vision. Your Fund. Your Legacy.

You choose from a variety of fund designs to match your grantmaking vision. By creating a fund in your Community Foundation, you can take advantage of all we have to offer:

To begin, you invest in the causes that matter most to you. The Community Foundation of Loudoun and Northern Fauquier Counties ensures your charitable investment is economical and worry free. You benefit from prudent fund management and the generous tax advantages associated with giving through a Community Foundation. And finally, you'll enjoy working with a committed staff with a deep knowledge of the community and the charities in our area.

We handle administrative functions, evaluate charities, and stay in tune with changing community needs to support you and help you achieve your charitable vision.



"Establishing the Loudoun Chamber Foundation fund with the Community Foundation was exceptionally easy and efficient, and that allowed the Chamber to move quickly to start supporting our

many deserving nonprofits operating here in our community."

—Tony Howard, President & CEO
Loudoun County Chamber of Commerce

1

Define your charitable and financial objectives.

Consider how you want your gift to be used, whether you want future family members involved, and how much involvement you personally want in making grant recommendations.

2

Choose a name for your fund.

Many donors choose a family name, but you can use any name that is meaningful to you.

3

Determine which assets you will use in creating your fund.

Gifts of cash, securities (publicly traded or closely held) or real estate can be accepted by the Community Foundation to set up a fund. Assets with a low-cost basis are often wise choices, since they offer maximum tax advantages: You pay no capital gains tax and receive a favorable income-tax deduction. You may also wish to review assets inside your retirement plan for possible charitable use. If you wish, we will work closely with your accountant and attorney to ensure your charitable wishes are clearly understood and applied.

4

Consider the type of fund that matches your charitable interests.

Our staff will help you identify what type of fund fits your vision! It may help, though, to understand how broad and flexible we can be as a giving vehicle with our array of donor crafted funds.

5

Make your gift to the Community Foundation.

While your gifts to establish a fund will be commingled with other Community Foundation assets for maximal investment benefits, income and appreciation are specifically tracked and tied to your fund, benefitting your fund for its growth and charitable grantmaking.

6

Make a gift through your Will.

Appropriate language to make sure your Will meets legal and tax criteria is available. Just ask!

Acorn Fund. Many of our philanthropists start a new fund by creating an Acorn fund, building to the endowed level of \$10,000 over a five-year period. An initial gift of \$2,000 or more is necessary to “seed” any of the funds below. And, many of our Acorn Funds build endowment while also doing immediate grantmaking.

Field of Interest Fund. This type of fund allows you to target an issue of need rather than a specific charity. The Community Foundation will make grants to those organizations most effectively serving the people and causes you want to help—the elderly, or hunger, or arts and cultural organizations, or education, or environment, for example. You define the “area of interest” and the Community Foundation takes it from there.

Donor Advised Fund. Donor advised funds closely mirror private family foundations, with significant advantages. A donor advised fund allows you to enjoy ongoing, even day-to-day involvement in the distribution of your gifts from your fund. You bring specific grant recommendations to the Community Foundation for consideration. Learn more on pages 4 and 5.

Designated Fund. You may name a specific charity to benefit from your gift, or, numerous specific charities to receive an annual grant. Should a designated organization cease to exist, the Community Foundation has the responsibility and authority to reallocate grants to another agency that most closely reflects your original vision.

Agency Fund. Charities often wish to create long-term endowments that will benefit their mission and purpose. The Community Foundation provides an excellent vehicle to ensure endowment gifts are carefully and diversely invested and managed.

Scholarship Fund. You may choose to dedicate a fund’s purpose entirely to helping students study and advance their education. The Community Foundation works with community volunteers to interview students and make award recommendations, or, can work with you to form your own selection committee.

Giving Circle Fund. Many of our Funds are created by a collective vision of multiple donors, each who tithe into a “giving circle”, and then, together, make grant recommendations. Giving Circles are a fantastic way to learn more about your local community and its charities, and increase impact as each grant is amplified in size.

General Fund. A gift to establish a General fund helps meet the changing needs of your community, now and in the future. General funds broadly support the well-being and vitality of the region and its residents and are distributed to qualified charities seeking support through the Community Foundation’s responsive grantmaking programs.

When you establish a General fund, you leave decisions about the use of your gift to the Community Foundation, trusting the Community Foundation’s knowledge and reach within the community to determine what needs are most pressing.



From here on, your charitable vision is nearly worry-free. The Community Foundation takes care of government filings, grant paperwork, auditing and accounting. Most importantly, you will have joined with others who have created a personal legacy that is true philanthropy.

To get started, contact Executive Director Amy Owen at (703) 779-3505 or (540) 687-5223 or via email at amy@CommunityFoundationLF.org.

Corporate Advised Funds. Corporations are often overwhelmed with requests for charitable gifts. Many corporations across America look to their local Community Foundation for a simplified, focused giving program, administered by Community Foundation staff. A corporation can establish a corporate advised fund applying personalized guidelines for grant making. Or, it may elect to give the Community Foundation full discretion over disbursements.

Transferring a Private Foundation or Trust Fund. A private foundation can be a great vehicle for charitable giving, but sometimes the process of managing the foundation’s legal affairs can diminish the joy of giving or become a burden to maintain. Existing private foundations or charitable trust funds can be easily rolled over to a named endowment fund within the Community Foundation, greatly reducing administrative overhead, while maintaining key elements of donor involvement and long-term, legacy vision. The disadvantages of private foundations or trusts—excise fees, administrative fees, lesser tax benefits, and due diligence administration—cause many to seek a more flexible alternative in the Community Foundation.

Community Foundation for Loudoun and Northern Fauquier Counties vs. a Private Foundation

Deciding how to best implement your legacy philanthropy is an important decision. You should weigh issues of responsibility, control, flexibility, and cost.

| Elements | Donor Advised Fund With Us | Private Foundation |
|--|--|--|
| Start Up Considerations | | |
| Cost | None | Incorporation fees, legal fees, accounting fees |
| Timeframe | Paperwork approved within days | Generally months to one year for final IRS approval |
| Financial Limitations | Considered endowed at \$10,000 | Most experts recommend at least \$2 to \$5 million |
| Tax Deductibility | | |
| Cash Gifts | Up to 50% of Adjusted Gross Income | Up to 30% of Adjusted Gross Income |
| Publicly Traded Securities | Fair Market Value Up to 30% of Adjusted Gross Income | Fair Market Value Up to 20% of Adjusted Gross Income |
| Real Estate and Closely Held Stock | No payout requirements. However, donor can distribute far more than 5% if wished! | Required annual payout of at least 5% of assets |
| Income and Reporting Considerations | | |
| Tax Status | We are a 501 (c)(3) Public Charity | A 501(c)(3) Private Charity |
| Excise tax on investment income | None | Up to 2% various taxes on net investment income |
| Tax Filings and Financial Audit | All inclusive under our filings | Must prepare and file Form 990 PF, State Filings |
| Publicity | | |
| Donor | Donor can receive optimal publicity OR choose total anonymity | Donors are publicly cited on Private Foundation Tax Return published on Guidestar.org |
| Administration | | |
| Grants Due Diligence | Grants due diligence, laws and regulations closely monitored and adhered to. Staff help to identify, investigate, assess grantees. | Must stay abreast of current laws; perform adequate due diligence of grantees and distribution rate |
| Investment Management | Benefits from our oversight and management, following a written investment policy | Responsibility of trustees |
| Donor Involvement | | |
| Documentation | Fund Agreement provides flexible approaches, including donor involvement in annual grant recommendations | Donor and/or Private Foundation Board controls |
| Scope | Advisory as protected and restricted by the Fund Agreement | Full legal control and accountability |
| Timespan | Flexible as donor directed | Most Private Family Foundations must seek professional oversight after three generations as family shifts, moves, loses interest |
| Summary | | |
| | Flexibility, greater tax deductions, efficient net proceeds to grantees, low administration costs, increased privacy from grantseekers, credible investment practices, knowledgeable staff, legal policies in place. | Autonomous Control |

Some F.A.Q.s about Creating a Donor Advised Fund

Can I make a grant outside of Loudoun and Fauquier Counties?

Yes. Please be sure to give us ample time to perform due diligence on charities new to the Community Foundation.

Can I give to my church or children's school?

Yes. Places of worship and education institutions are charitable. So are grants that lessen the burden of government through poverty abatement and community improvement.

Can I recommend grants and be anonymous to the public?

Yes, absolutely. The Community Foundation will protect the anonymity of its donors. Please be sure to let us know of your wishes.

Can I recommend grants in memory or in honor of someone?

Yes. Include this information with your grant recommendation.

Can I make a grant to a charity whose board on which I serve?

Yes, as long as you do not pledge such a grant in advance of our very quick Board approval or receive personal benefit from the grant.

Can I fulfill a pledge to give to a charity?

No. Laws prohibit membership, pledges, sponsorships, tickets or other gifts that provide a personal benefit to your or your family.

Can I recommend multi-year grants?

Yes. The Community Foundation will consider such requests. But, don't overextend your fund's resources.

Can staff help me with ideas and research on area charities?

Yes. Our day-to-day work includes helping you learn as much as you wish about our community and its charities. We can help you in a number of ways. Please call us.

When and how much can I add to my donor advised fund?

Unless your fund is set up otherwise, you or anyone may add any amount at any time, including gifts of stock, real estate, insurance, and other forms of giving.

May I recommend grants from both income and principal of my fund?

As long as your fund agreement does not expressly prohibit expenditure of principal, you may make grants from both.

Is there a limit to how many grants I can recommend in a year?

No. However, a minimum grant of \$100 is strongly suggested.

**There is so much more we'd like you to know.
Please contact us, today.**

Our 2015

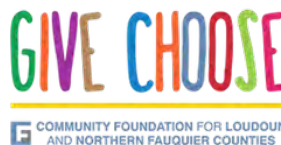
Our work involves much more than serving as grantmakers and working with caring donors. We also serve as capacity builders, conveners, and thought leaders. We build networks and maintain partnerships to achieve our vision for the variety and strength of our programs.



Social Impact Institute

Investing in community works best when tackled from as many diverse positions as possible. Seeded by one of our funds, 100 WomenStrong, the Social Impact Institute is a “deeper dive” training program tailored to the individual strengths and weaknesses of our local nonprofit staff and volunteers. In 2015, we offered Leadership Development

through personalized executive coaching and group cohort sessions over a 12-month period led by professional Leigh Shields. Graduates of the 2015 program include Jennifer Montgomery serving Loudoun Interfaith Relief, Nicole Acosta serving Loudoun Abused Womens Shelter (LAWS), and Leslie Mazeska serving Loudoun Literacy Counsel.



Give Choose

Twenty-four hours of community giving can result in big things when we work together as community philanthropists. Give Choose, held in May of each year, generated \$136,000 from the generosity of 900 donors from Loudoun and Fauquier Counties and all over the U.S. in 2015.

In addition to hosting the event, we offer training on fundraising and social media communications for any interested charity. It's all part of our mission.

Give Choose Sponsors 2015



**THE HILLSDALE
FUND**

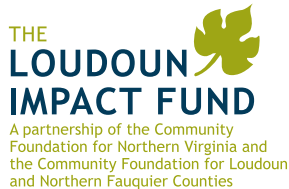
Work



Forward Turn Youth Grantmakers

Supported by the S. Murray Rust and Mary H.C. Rust Student Philanthropy Project endowment fund, Forward Turn entrusts area high-school teens with the role as local grantmakers. Participants take part in learning how to write grant proposals as well as analyze proposals submitted by local groups. In 2015, our Forward Turn grantmakers partnered with Loudoun County Parks Recreation and Community Services and its Youth Advisory Council.

We know we can help these teens strengthen their knowledge and commitment to charity and philanthropy as they become adults. Programs like Forward Turn have been shown to more than quadruple volunteerism rates, double giving rates, and prepare our youth to be active community philanthropists.



Loudoun Impact Fund

Giving Circles such as the Loudoun Impact Fund provide an increasingly popular means to easily involve citizens as grantmakers. In partnership with our sister community foundation, Community Foundation for Northern Virginia, the Loudoun Impact Fund collects gifts of \$1,000 from individuals and \$5,000 from businesses to build a pool of grantmaking funds. Each participating member helped to decide the focus of \$64,500 in community grants to benefit local groups serving our elders and our youth.



Nonprofit Academy

Together, the Community Foundation for Loudoun and Northern Fauquier Counties along with partners Loudoun Cares and the Loudoun Chamber of Commerce undertake a certificate-series and learning program designed just for the staff and volunteer leaders of our local nonprofit organizations. The program in 2015 was very well received with sessions such as Tax Reform and Quickbooks Tutorial; Leadership Development; Communicating Your Case Through Values Based Outreach; Board Development and Fundraising; and Grantwriting and Research.



Social Profit Initiative

In partnership with the Washington Association of Regional Grantmakers, the Community Foundation has gathered together a unique team representing local businesses, philanthropists, nonprofit staff, faith-based representatives, educators, and government agency staff to form a Steering Committee of thought-leaders. Our goal? To identify voids in our community's social profit sector and seek partnerships and solutions to tackle them. It's a community conversation of purpose that will guide the Community Foundation in future work and partnerships.

2015

Summary Financial Review

Mitchell & Co., P.C. Certified Public Accountants, issued an unqualified opinion on our financial review ended December 31, 2015. For a full copy, please contact us at (703) 779-3505 or (540) 687-5223 or Amy@CommunityFoundationLF.org.

Assets

| | |
|----------------------------|--------------------|
| Cash & Cash Equivalents | \$837,821 |
| Gifts or Grants Receivable | \$80,000 |
| Investments | \$2,039,592 |
| Other | \$20,372 |
| Total Assets | \$2,977,785 |

Revenues

| | |
|-----------------------------|--------------------|
| Contributions & Events | \$1,468,600 |
| Investment Income | \$77,567 |
| Gains/(Loss) on Investments | (\$129,098) |
| Total Revenues | \$1,417,069 |

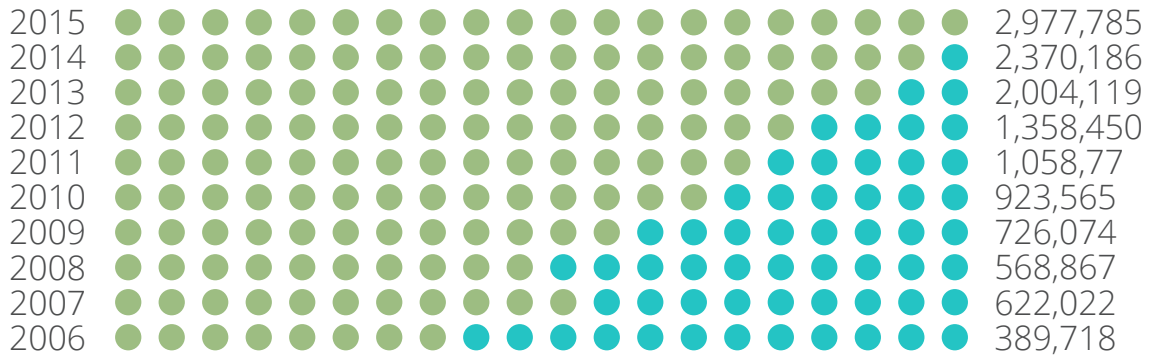
Grants & Expenses

| | |
|---|------------------|
| Charitable Grants | \$563,560 |
| Less Grants From Agency Endowment Funds | (\$2,175) |
| Total Grants and Expenses | \$561,385 |

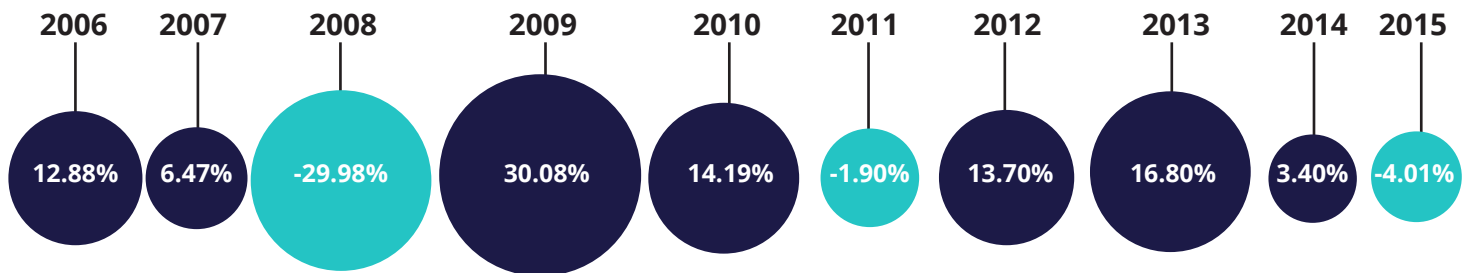
Endowment Funds By Type

| | |
|-----------------------------|-------------|
| Unrestricted Endowment | \$34,848 |
| Agency Endowment | \$341,828 |
| Designated Endowment | \$654,519 |
| Field of Interest Endowment | \$1,356,532 |
| Donor-Advised Endowment | \$405,497 |

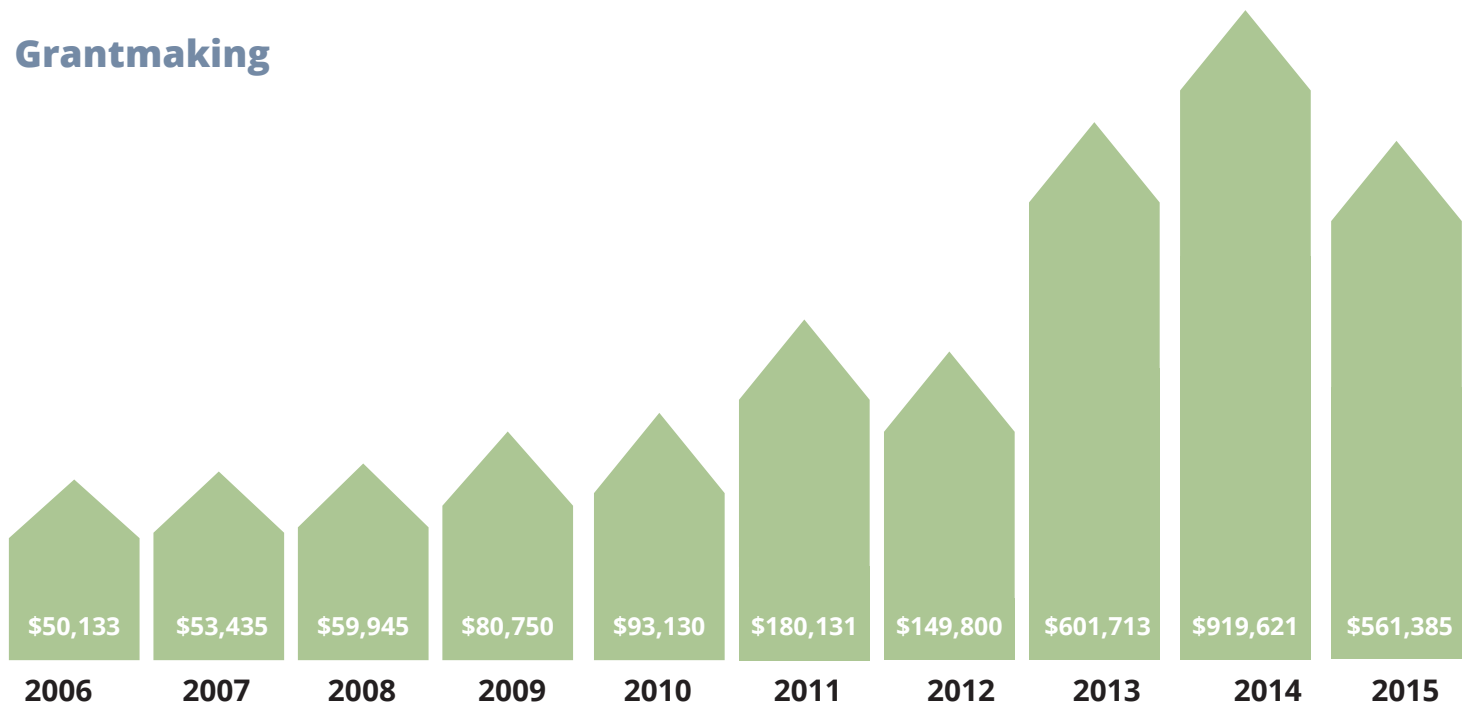
Assets



Investment Rate of Return



Grantmaking



Charitable Funds



DARK SKY INITIATIVE FUND

Created to support the Town of Middleburg in its beautification program and help offset costs for dark sky street lighting.



THE GOLLOBIN FAMILY FUND

This designated fund supports musical celebration in the preeminent historical village of Waterford.



Created for Detention Center support the positive role incarcerated County Juveniles



A community collaborative among

some of the region's influential women (and a few good men!) leaders, "changemakers," and philanthropists, donors of this giving circle pool their gifts to both build endowment and make immediate grants into the community with a focus on addressing issues of shelter, health, education and hunger in Loudoun County.



DON & AMY OWEN CHARITABLE FUND

As a donor advised fund, grants are recommended by the founders to benefit local and national charities that appeal to their personal philanthropy.



THE HILL SCHOOL ENDOWMENT FUND

As an agency fund, annual distributions support the success and advancement of The Hill School.



Founded by Loudoun County Corporation designated for Interfaith Relief the hungry and food assistance to any person Loudoun County

ALL AGES READ TOGETHER



Working with disadvantaged children who have little or no literacy experience, this fund supports All Ages Read Together's mission to offer programs to spark a love of reading and improved academic outcomes.

ENDOWMENT FOR THE COMMUNITY

The Community Foundation Board of Directors established this fund as a means to provide grantmaking into our community to meet the most pressing and changing needs in Fauquier and Loudoun Counties.



JIM AND BETTY HERBERT FAMILY FUND

This donor advised fund includes multiple family members who make grantmaking recommendations from the fund to benefit local qualifying charities.



LEADERSHIP ENDOWMENT

This Fund Loudoun County emerging good of Loudoun County



BLUE RIDGE HOSPICE ENDOWMENT

This agency endowment provides annual support for its meaningful end-of-life programs and operations in the community.



FREDERICK L. SPENCER, JR. MEMORIAL FUND

This field-of-interest fund, created in memorial, supports area programs in arts, music, and drama.

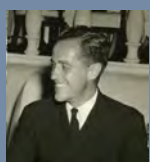


JOHN PAGE TURNER COMMUNITY HOUSE FUND

This designated fund offsets the maintenance costs of the John Page Turner House, a community center run by The Plains Community League.

LOUDOUN VOLUNTEER CAREGIVER ENDOWMENT

Created by H Loudoun County Corporation America (Stonewall Center), this benefits this support, transportation homebound



CHARLES TIFFANY RICHARDSON FAMILY FUND

After his death, his daughter wanted to do something special in his memory. Mr. Richardson loved history and the environment. Grants from this donor advised fund reflect his values.



GAVIN RUPP "I PROMISE 15" SCHOLARSHIP FUND

In honor of the late Gavin Rupp, scholarship awards support students pursuing a degree in healthcare services, with an emphasis in oncology.



LOUDOUN CHAMBER FOUNDATION

Founded by members and supporters of the Loudoun Chamber of Commerce, this field-of-interest fund supports charities in Loudoun County and the value they bring to our local quality of life.



As a designated support the operation of Festival held Future distribution support film workshops, screenings to future filmm



LOUDOUN COUNTY JUVENILE DETENTION CENTER FUND

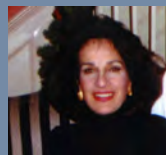
This fund supports the Loudoun County Juvenile Detention Center, distributions for various programs to provide support and models for youth in the Loudoun County Juvenile Detention Center.



MORVEN PARK CHARITABLE FUND

This agency fund helps fulfill its mission to preserve and advance the ideals of Westmoreland Davis (governor of Virginia 1918-1922) and his wife, through programs that reflect civic-minded leadership, sustainable agriculture, and the conscientious use of open space.

SHARYN'S ANGELS CANCER FUND



In memorial to Sharyn Crockett Bass, this fund supports individuals suffering from cancer and requiring financial assistance.



WILLOWCROFT SCIENCE ENDOWMENT

This designated fund provides support to the Loudoun Education Foundation for its efforts to promote science and higher education innovation.

LOUDOUN INTERFAITH RELIEF ENDOWMENT FUND

This fund supports the Hospital of America (Stone Capital Center), this fund supports Loudoun Interfaith Relief and its work to feed the hungry by providing emergency assistance to those in need of food or family living in Loudoun County.

NEAL AND DONNA GUMBIN CHARITABLE FUND

This donor advised fund was founded by 2012 Cannonball Invitational Amateur winner, Neal Gumbin. The fund supports charities as guided by the Gumbins.



SMASHING WALNUTS FOUNDATION

This fund is dedicated to "cracking the cure for childhood brain cancer" by making distributions to charitable programs and institutions dedicated to childhood brain cancer research, treatment, and awareness.

WINDY HILL ENDOWMENT FUND



Supporting all programs of the Windy Hill Foundation as it fulfills its mission to provide safe, decent, and affordable housing and family services to low and lower income families and elderly in Loudoun, Fauquier, and Clarke Counties.



LEADERSHIP LOUDOUN FUND

This fund benefits Leadership Loudoun to develop current and future leaders to serve the Loudoun County.



PETER M. HOWARD MEMORIAL FUND

Created by the family of the late Peter Howard, this field-of-interest fund celebrates his appreciation of historic preservation and open space in Loudoun and Fauquier Counties.



TEEN SATURDAY HILL SCHOOL FUND

The Hill School's Teen Saturday Program provides opportunities for students ages 6 - 11, meeting fifteen Saturdays during a school year to attend programs and field trips otherwise not available to program participants.



YELLOW RIBBON FUND, INC.

Welcoming Our Injured Service Members Home

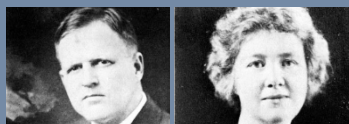
YELLOW RIBBON FUND

Created by 2012 Cannonball Invitational Amateur winner, Mark Gerencser, this designated fund offers permanent endowment funding to this Maryland based group that provides practical support to injured service members and their families while they're at Walter Reed National Military Medical Center, Fort Belvoir Community Hospital, and after they return to their hometowns.

LOUDOUN VOLUNTEER CAREGIVERS



This fund supports the Loudoun Volunteer Caregivers group's work to aid, support, and care for the elderly and disabled citizens.



S. MURRAY RUST AND MARY H.C. RUST STUDENT PHILANTHROPY PROJECT

This fund empowers students as community grantmakers, providing grant support to youth-driven philanthropic projects in our area through Forward Turn.



WEBBER JAZZ FUND

This field-of-interest fund supports local traditional jazz performances and educational opportunities for practical jazz education.



This designated fund, distributions for promotion and production of the Middleburg Film Festival annually in October. Distributions will also support making labs, production and educational film to enrich and support filmmakers.



SANDERS-OSCANYAN MEMORIAL FUND

This designated fund supports Loudoun ENDependence dedicated to providing peer counseling, mentoring, and other self-help services for those with disabilities.



WHEELER FAMILY FOUNDATION

Donor advised by the Wheeler Family, this fund supports charities that reflect the donors' personal interests and charitable values.



Your Name Here

Join the ranks of Loudoun and Fauquier's enthusiastic philanthropists when you establish a fund at the Community Foundation for Loudoun and Northern Fauquier Counties. We've been helping people like you build a legacy forever since 1999.

Grantmaking

Reza Mirzai Photography

CULTURE

Bluemont Concert Series, Berryville, VA—\$1,217

(*Give Choose 2015*) General Support

The Community Music School of the Piedmont, Upperville,

VA—\$700 (*Frederick L. Spencer Jr. Memorial Fund*)

General Support

Loudoun Museum, Leesburg, VA—\$801 (*GiveChoose 2015*

and Richardson Family Fund) General Support

Middleburg Film Festival, Middleburg, VA—\$1,470

(*Middleburg Film Festival Fund*) General Support

Mosby Heritage Area Association, Middleburg, VA—\$600

(*Peter M. Howard Memorial Fund*) General Support

Round Hill Arts Center, Round Hill, VA—\$423 (*Give Choose*

2015) General Support

Waterford Foundation, Waterford, VA—\$10,975

(*Charles Tiffany Richardson Family Fund, Peter M. Howard Memorial Fund, and Give Choose 2015*) General Support

EDUCATION

All Ages Read Together, Leesburg, VA—\$32,700

(*All Ages Read Together Endowment, Wheeler Family Foundation, 100 WomenStrong, Loudoun Impact Fund, and Trivia Night*)

Distributions support its mission to reading programs for at-risk preschool children and their parents



Brianna Jennings, Hamilton, VA, attending

Michigan State University—\$500 (*Gavin Rupp “I*

Promise” Scholarship Fund) to support her studies and future career in oncology healthcare.

Highland School, Warrenton, VA—\$1,000 (*Forward Turn/S.*

Murray Rust and Mary H.C. Rust Student Philanthropy Project) Funding a “teens opposing poverty” project to aid homeless families in Fauquier County

Journey Through Hallowed Ground, Waterford, VA—\$300

(*Charles Tiffany Richardson Family Fund*) General Support

Leadership Loudoun, Leesburg, VA—\$920 (*Give Choose 2015*)

General Support

Rally for Our Kids, Loudoun County—\$1,024 (*Loudoun*

Chamber Foundation) Funding to outfit low-income Loudoun County children with school supplies

Loudoun Education Foundation, Leesburg, VA—\$100,705

(*100 WomenStrong, Loudoun Impact Fund, Willowcroft Science Endowment, and Give Choose 2015*) Funding supported the creation and expansion of a food backpack coalition program for low-income children throughout Loudoun County public schools; to offset costs for part-time staffing for food delivery systems; monetary awards for winners of the annual science program; General Support)

Loudoun Literacy Council, Leesburg, VA—\$6,265 (*Loudoun*

Impact Fund and Give Choose 2015) Expansion of head-start programs and low-income family literacy programs; General Support

The Hill School, Middleburg, VA—\$4,475 (*The Hill School*

Endowment and the Jim and Betty Herbert Family Fund) General Support



Caroline Nicotra, Leesburg, VA, attending

Virginia Tech—\$1,500 (*Gavin Rupp “I Promise”*

Scholarship Fund) To support her studies and future career in oncology healthcare.

Northern Virginia Community College, Springfield, VA

—\$2,000 (*Loudoun Chamber Foundation*) To support SySTEMic Solutions program

Social Impact Institute a program of the Community Foundation for Loudoun and Northern Fauquier Counties,

Leesburg, VA—\$6,000 (*100 WomenStrong and Endowment for the Community*) To create a personalized training and leadership development program for local nonprofit staff and leaders

Tell Me Town Foundation, Ashburn, VA—\$35,000 (*Wheeler Family Foundation*) To help publish health education books for young readers

HUMAN SERVICES

A Place to Be, Middleburg, VA—\$58,633 (*Wheeler Family Foundation and Give Choose 2015*) Financial support for new offices and General Support for programs providing music therapy to benefit area disabled residents and youth

American Red Cross, Leesburg, VA—\$1,094 (*Give Choose 2015*) General Support

Ashburn Fire and Rescue, Ashburn, VA—\$1,347 (*Give Choose 2015*) General Support

Blue Ridge Hospice, Winchester, VA—\$469 (*Give Choose 2015*) General Support

Boulder Crest Retreat for Wounded Warriors, Bluemont, VA—\$699 (*Give Choose 2015*) General Support

Cormac Finn McCarty Foundation—\$1,000 (*Endowment for the Community*) General Support made in honor of the Loudoun Chamber of Commerce Small Organization The Wellness Connection

Crossroads Jobs, Leesburg, VA—\$2,865 (*Give Choose 2015*) General Support for employment training and placement services for low-income and at-risk individuals

Department of Family Services, Leesburg, VA—\$1,500 (*Juvenile Detention Center Fund*) In support of programs and purchases for youth in the Center

Dulles South Food Pantry, Dulles, VA—\$1,500 (*100 WomenStrong*) For purchase of cold storage systems and to offset internal systems purchases



Our grantmaking is guided by the vision and values of our donors and the variety of fund instruments we offer.

Five Stones, Leesburg, VA—\$10,000 (*Wheeler Family Foundation*) General Support

Friends of Loudoun Mental Health, Leesburg, VA—\$1,274 (*Give Choose 2015*) General Support

Healthworks of Northern Virginia, Leesburg, VA—\$24,896 (*100 WomenStrong, Endowment for the Community, Give Choose 2015*) To support a pediatric dental program; General Support

Heartmarks Art Therapy, Round Hill, VA—\$376 (*Give Choose 2015*) General Support

INMED Partnerships for Women, Sterling, VA—\$15,069 (*Loudoun Impact Fund, 100 WomenStrong, Give Choose 2015*) Offset costs for an after-school program for low-income families; purchase of furniture and volunteer incentives for the Opportunity Center; General Support

Joy to the Kids, Ashburn, VA—\$4,443 (*Give Choose 2015*) General Support

Loudoun Abused Womens Shelter (LAWS), Leesburg, VA—\$45,921 (*Loudoun Impact Fund, 100 WomenStrong, Wheeler Family Foundation, Trivia Night, Give Choose 2015*) In support of children services in the emergency shelter and Child Advocacy Center; increase staffing at the Child Advocacy Center; General Support

Loudoun County Department of Family Services, Leesburg, VA—\$1,048 (*Sandra Ward Memorial Fund*) To help offset expenses for publications and materials participating in family service programs

Loudoun County Senior Services Cascades Advisory Board, Sterling, VA—\$1,000 (*Endowment for the Community*) Made in honor of Loudoun Chamber of Commerce Large Organization Leadership awardee Falcons Landing

Loudoun Families for Children, Leesburg, VA—\$258 (*Give Choose 2015*) General Support

Loudoun Free Clinic, Leesburg, VA—\$11,209 (*Wheeler Family Foundation, Give Choose 2015*) General Support

Loudoun Habitat for Humanity, Leesburg, VA—\$3,310 (*S. Murray Rust and Mary H.C. Rust Student Philanthropy Project Forward Turn, Trivia Night, Give Choose 2015*) Funding to launch a Youth United volunteer program; General Support

Loudoun Interfaith Relief, Leesburg, VA—\$27,098 (*Loudoun Impact Fund, Loudoun County Chamber Foundation, Give Choose 2015*) To support food access for senior citizens and youth; General Support

Loudoun Therapeutic Riding, Leesburg, VA—\$9,425 (*100 WomenStrong, Give Choose 2015*) To purchase safety equipment; General Support

Loudoun Chamber Foundation, Leesburg, VA—\$1,000 (*Endowment for the Community*) Made in honor of Tom Toth, Sr., named Loudoun Chamber Executive Professional Leader of the Year

Loudoun Volunteer Caregivers, Leesburg, VA—\$26,734 (*100 WomenStrong, Loudoun Impact Fund, S. Murray Rust and Mary H.C. Rust Student Philanthropy Project Forward Turn, Trivia Night, Give Choose 2015*) Expansion of services for elderly; volunteer food delivery for home bound elders; General Support

McLean Bible Church, McLean, VA—\$1,000 (*S. Murray Rust and Mary H.C. Rust Student Philanthropy Project Forward Turn*) To purchase shoes for delivery to families in need in Dominion Republic

Middleburg Community Center, Middleburg, VA—\$121 (*Give Choose 2015*) General Support

Mobile Hope, Leesburg, VA—\$6,569 (*Trivia Night, Give Choose 2015*) General Support

NAMI Northern Virginia, Reston, VA—\$5,000 (*Loudoun Impact Fund*) Mental health education in Loudoun County schools

National Center for Children and Families, Bethesda, MD—\$5,000 (*Loudoun Impact Fund*) To offset costs for eye glasses and school supplies for children in need

Project Horse, Purcellville, VA—\$9,890 (*Give Choose 2015*) General Support

SCAN of Northern Virginia, Alexandria, VA—\$7,700 (*Loudoun Impact Fund*) To fund an immigration family reunification program at Park View High School

Tiger Lilly Foundation, Reston, VA—\$1,000 (*Endowment for the Community*) Made in honor of Loudoun Chamber Young Professional Leader Melanie Schmidt

Vets Moving Forward, Alexandria, VA—\$20,800 (*Wheeler Family Foundation*) General Support

Women Giving Back/Home Aid NOVA, Chantilly, VA—\$10,000 (*100 WomenStrong*) To offset costs of a clothing conveyer rack

Yellow Ribbon Fund, Bethesda, MD—\$235 (*Yellow Ribbon Fund*) General Support

YMCA, Leesburg, VA—\$5,000 (*Loudoun Impact Fund*) To support after-school programming for underserved children

Young Life Western Loudoun Chapter, Purcellville, VA—\$235 (*Give Choose 2015*) General Support

NATURE

Continental Divide Trail Coalition, Golden, CO—\$500 (*Don and Amy Owen Charitable Fund*) General Support

Land Trust of Virginia, Middleburg, VA—\$1,161.59 (*Peter M. Howard Memorial Fund and GiveChoose 2014*) General Support

Loudoun Wildlife Conservancy, Purcellville, VA—\$250 (*Peter M. Howard Memorial Fund*) General Support

Morven Park, Leesburg, VA—\$170.82 (*GiveChoose 2014*) General Support

Mosby Heritage Area Foundation, Middleburg, VA—\$750 (*Peter M. Howard Memorial Fund*) General Support

Oatlands, Leesburg, VA—\$1,477.11 (*Charles Tiffany Richardson Family Fund and GiveChoose 2014*) General Support

Piedmont Environmental Council, Warrenton, VA—\$318.11 (*GiveChoose 2014*) General Support



Reza Mirzai Photography

Friends of the Foundation

"Investors in our community." That's how we characterize our Friends of the Foundation, each whom make a gift of \$1,000 or more to support the day-to-day operations and variety of programs undertaken by the Community Foundation.

Anonymous (1)
Kate Armfield
Jim and Sandi Atkins
Andrew Bishop
Brad and Bailey Davis
David and Laura Hathaway
Merritt and Jane Jones

Joanne Kunz
Kirsten and Will Langhorne
Connie Moore and Jim Behan
Tom and Ann Northrup
Amy and Don Owen
Lew Parker
Chris and Kiernan Patusky

John and Peggy Rust
Patricia and John Stout
Jim Thompson
John Timothy and Louise (Kiki)
Thompson
Hughes and Susan Webb

Thank You!

2015 Philanthropists

Supporters of our many personalized funds and programs

Anonymous (91)
Gregory Adgate
Donna Afanador
Audrey Alberstadt
Sarah Ali
Michael Altshuler
Eileen Alvo
Ingrid Anderson
John Andrews
Lisa Antonucci
Howard and Gloria Armfield
Kate Armfield*
M. Armstrong
Peter Arundel
Jacqueline Aspiro
Jim and Sandi* Atkins
Tammy Atkins
Abraham and Minna
Bacarra
Denise Bailey
Abigail Baker
Jeffery and Margaret
Ballstrere
Phil and Carol Barbe
Lisa Barrett
Harry and Peggy Bass
Tanya Bassett
Lee and Zelda Batts
Michael Beckman-Norris
John and Tyra Behrens
Stephanie Bergen
Marvin Beriss
Samantha Berkowitz
Nathan Berman
Damien and Cindy
Bertucelli
Amy Binder
Gem Bingol
Andrew* and Jane Bishop
Jeanette Bland
Kelly Blanks
Barbara Bloom

Alana Blumenthal
Sheryl Bobo
Joe and Debbie Boling
David Bolton
John Bolton
Laura Bolton
Aleshia Bonlla
Leanne Bortner
Amy Bosserman
Jon Bost
Pamela Bove
Christi Bowman
Janet Braverman
Laurie Brody
Betsey Brown
Childs F. and Elaine Burden
Paige Buscema
Robert Butler
Sheldon and Allison
Buytenhuys
Janice Caine
Larry Caine
Lisa Caine
Antonio Calabrese
John and Elizabeth
Ashley Campbell
Campolattaro
Luis Camps
Tracy Carathanasis
James Carmichael
Kimberly Carroll
Vivian Cartagena
Marcia M. Carter
Edith A. Cassidy
Patrick and Jennifer Cassidy
Deborah Cea
Kenneth B. Chaletzky
Kelly Chaney
George Cheretis
Jill Cheretis
Lynn Chernin
Nicholas Chianese

*Denotes current or immediate-past Board Member or Committee Member





Reza Mirzai Photography

Eric and Linda Chonko
 Lance Christensen
 Patricia Christian
 L. H. Cines
 Mark and Joanne Clark
 Randall Cochran
 Chanel Cohen
 Michael Cohen
 Joseph Condie
 Taryn Condo
 Timothy Coneys
 Alexis Connolly
 Victoria Cook
 Michael and Meribeth Cooper
 Albert and Michele Copeland
 Jonathan Corcoran
 Mary Elizabeth Cornejo
 John and Elizabeth Cottrell
 Carey Crane
 Sara Cravens
 Patricia Ann Cregar
 Patrick and Emily Cripps
 James Cumberton
 Joseph and Amy Cumes
 Samantha Curry
 Thomas and Laurie Cushing
 Allan and Marilyn Daniels
 Kevin Daniels
 Steven Daniels
 Stephanie Davari
 Heather Davies
 Brad and Bailey Davis
 Jeffrey Davis
 Lourdes DeCarlo
 Jenna DeLashmutt

Clare Delesie
 Deborah DePuy
 Leigh and Marion Devoe
 Rick Dewar
 Amanda Dietrich
 Heidi Dodds
 David Dolinger
 Rose Ann Domenici
 Marsha Domesick
 Yayne Donohue
 John J. and Lynne Donovan, Jr.
 Yvonne Douglas
 Gsil Doyle
 Donna Drake
 J.L. Eads
 Heather Eck
 Kathleen Eid-Heberle
 Bob and Joan Eliot
 Ira Entis
 Herbert Epstein
 Shannon Fairbanks
 Kathleen Farrell-Dupin
 Laura Fears
 Carole Feld
 Mark Ferguson
 Mary Finley
 Sara Fisch
 Nina Flowers
 Donna Floyd
 Jonathan Forman
 Christina Fountain-Dixon
 Karl and Loraine Franz
 Dan Freire
 William and Marcy Fries
 Jason Gad

Jeffrey Gad
 Alison Galbraith
 Manda Galin
 Christina Garber
 Judith Ann Garlick
 Gregory Gartside
 Carole Gerber
 Sally Gersten
 Steven Gersten
 Kevin and Christine Gilfedder
 Ron and Beth Glaser
 Christine Gleckner
 Sivan Golan
 Diana Goldberg
 Heather Golden
 Amy Goldman
 Melissa Goldman
 Jane Goldwyn
 John and Theresa Golinvaux
 William Gompers
 Tania Gonda
 Alberto and Kimberly Gonzalez
 Ab Gooen
 Lisa Grau
 Ellen Gray
 Gloria Grayeski
 Rosa Graziano
 Alex Green
 Patrick Green
 Julie Greenberg
 Sandra Greenblatt
 Kurt and Elizabeth Greening
 Robert Gurwin
 Lonnie N. Haaland
 James M. Hackman
 Michael and Kim Haines
 Janet Halecky
 Paula G. Halewski
 Gregory and Wendy Hall
 Rochelle Hanin
 Lawrence Hannon
 Kristin Hanson
 Karen Harbaugh
 Melody Harness
 Kevin and Valerie Harnisch
 Dawn Harp
 Andrea Hart
 Joanne Hart

John and Valeria Hartmann
Adam and Jamie Harvey
David* and Laura Hathaway
Shawn Hawes
Elizabeth Heagy
Carlton and Heather Hebert
Pamela Hemstreet
Betty Herbert
James B. and Jennifer Herbert
James H.* and Stewart Herbert, Jr.
Tina Hess
Lauren Hester
Aaron Higbee
Melissa Highley
Oscar T. and Judy Hines
Everett Randall Hollister
Dan Holloway
Rolf Holman
Brian and Roxann Hooper
Sharon Horgan
John and Erika Horner
Martin Horowitz
Neysa Horsburgh
Anthony Howard
Miranda Howard
Therese Howe
Kristi Huber
Margaret Huberman
Marco and Maria Huertas
Kathleen Hughes
Neal Huneycutt

Martha Hunter
Sherry Husney
Paul and Alexandra Irizarry
Carolyn Jacobs
Robyn Jacobson
Andrew Johnson
Helene Johnson
Sheila Johnson
Virginia Johnson
Kathryn Jones
Merritt and Jane Jones
Jerry Kalke
Brigid Kane
Brad and Eileen Kanter
Elyann Katz
Leana Katz
Taylor Katz
Laura Kaufmann
David and Carol Kee
Elisa Kepner
Heather Kern
Tress Kimble
Russell Kokal
Cynthia Korenvaes
Holly Kowalczyk
Michael and Karen Krei
Aleksey Kudrin
Thomas Kuehhas
Gary and Ellen Kugler
Joanne E. Kunz
Robin Kydd

Nicole Lam
Fady Lamaa
Gretchen Lang
Kirsten* and Will Langhorne
Donald and Lenore Lanza
Jennifer Lasky
Patrick and Jennifer Latessa
Deborah Lauren
James Lawson
Catherine Leonard
Jocelyn Lewis
Judy J. Lewis
Mark Lewis
Werner and Denise Lippuner
John and Christina Lisciandro
Krista Lissner
Jodi Lockwood
Kent Lombardi
Adrian and Deborah Lorimer
Angelica Lunney
Kathleen M. Lynch
Traci Lyon
Lydia Mahan
Sally Mallison
Drew Manning
Stephanie Marcus
Pamela Maroulis
Dario Marquez, Jr. and Wendy
Thompson
Jacqueline Badger Mars
David Martens





Reza Mirzai Photography

Jeff Mascott
 Paul M. Mass
 Kelly Matechak
 Jim and Rebecca McDermott
 Eugene and Paula McGee
 Jerilynn McSorley
 Peter Meissner
 Kristina Mentzer
 Elizabeth Messner
 M. Androniki Michael
 Benjamin and Bonnie Miele
 Betty Mileto
 James Millar
 Beverly Millar
 Eileen Millar
 Joseph and Greta Millar
 Mark E. and Ellyn Millar
 Sara Beverly Millar
 Christine Mills
 Teresa Minchew*
 Richard Mitchell
 Jennifer Montgomery
 Connie Moore* and Jim Behan
 James P. Mullady
 Barbara Murphy
 Kari Murphy
 Marian Naik
 Dean Nazor
 Kathleen Newbold
 Katie Newbold
 Alison Newman
 Jennifer Newton
 Steven Nissen
 Anthony R. Noerpel

Steve Nordhus
 Thomas A.* and Ann Northrup
 Jamie O'Shea
 Daniel and Mary Olmetti
 Margaret Oriot
 Melissa Osborne
 Don and Amy Owen
 Rebecca Owens
 Daniel Pancoast
 Rahman Parker
 Kate Passow
 Nancy Passow
 Neeru Pathepuram
 Chris and Kiernan Patusky
 Barbara Paugh
 Aaron and Jennifer Pawlowski
 Jessica Payne
 Darlene Pearson
 Bridget Penberthy
 Robert and Heather Peterson
 Ben and Aysel Pierson
 Lynn Pintavalle
 Stephanie Place
 Stephen T. and Judith Plescow
 Joshua and Anne Potter III
 Stephen C. and Diana Price
 Alfred and Lenore Pritt
 Wayne Propst
 Ari Prostack
 Brad and Betsy Quin
 Michael Ragozin
 Patrick and Catherine Rainville
 John and Kathleen Ramsey
 Kathleen Ramsey

Shannon Randall
 Edith Rashewsky
 Kenneth D. and Pat Reid
 Michael and Krystyna Reign
 Janine Rethy
 Schuyler Richardson
 Stephanie Riggs
 John and Cynthia Rigoli
 Sharon Ringstaff
 Wayne Riskin
 Lewis Robinson
 Stacy Rodgers
 Lauren Romaelle
 Catie Romano
 Robert Ross, Jr.
 Edie Rubenstein
 Lynn Rubin
 John M.* and Peggy Rust
 Karen Ryan
 Amishi Sabnis
 Carolyn Saffer
 Breanne Sanders
 Anne Saxena
 Chetana Saxena
 Frederick and Vanessa Schaaf
 Barbara Schaufeld
 Karen Schaufeld
 Michael Schaufeld
 Richard S. and Cindy Schaufeld
 Brian and Lisa Schmidt Schaufeld
 Sarah Schreiber
 Millie & Marty Schwartz
 Liz Scimonelli Campbell
 Katy S. Senkus
 Christina Serola
 Elaine Serota
 Brian Shaner
 Sheila Shapiro
 Allan Shedlin
 Michele Shedlin
 Evelyn Sheftel-Shapiro
 Nancy Shelton
 Nazanin Shooshani
 William C. Silberman
 Scott and Lori Silvasy
 Janet Silverstein
 Ashley Simsik
 Patti Sinnen

John Sisson
Michelle Skoorka
Richard Skor
Joseph and Elizabeth Slovensky
Carol Smith
James Smith
Maralyn Smith
Timmie and Linda Smith
Leslie Smolin
Howard and Sharon Solomon
Jonathan Solomon
Latisha Spaulding
Robb Spewak
Wendy Spiro
Richard Squires
Bernhard G. Stamm
Stacy Stang Kelly
Debbie Steinfeld
Melanie Stevens
Andrew Stifler
Michael and Nancy Stopper
Jon and Patricia* Stout
Amy Strange
Lucie Stroble
Suzanne Strulowitz
Lee Styles
Camilla Sullivan
Raj and Sujata Sundaram
Joanna Sutton

Matthew and Elizabeth Sweeney
Kimberly Swope
Becky Szymcik
William N. Taliaferro
Carolee Talley
Mike Taylor
Jim Thompson
John Timothy & Louise (Kiki)
Thompson
Vanessa Tinsley
Mark Toft
Caroline Toye
Susan Trench
Michael and Elizabeth Trivisonno
Leonid Tsoi
Ralph Tuccillo
Katy Tyrrell
Sheri Underkoffler
Wayne VanSant
Suzanne Vasta
Keith Vaughan
Joseph Vendi
Sharon Virts
Joanna Vivanco
Steven and Melissa Vivino
Denise Vossen
Yasmin Wade
Kimberly Wagner
Paul and Rae Wallach

Vicktoria Warlaumont
Amy Wasser
E. Hughes and Susan* Webb
Jennifer Webber
Ann Wechter
Bonnie Weeks
Melissa Weicker
Morris Weinberg
Jan Weiner
Lizette Weingard
Brad Weisberg
Ellen Weiss
Kevin and Elizabeth Wetmore
Beth Whalen
Deborah White
Richard and Jennifer Wike
John and Kimberly Wiley IV
Gregory and Amber Williams
Peter and Mary Williams
Colleen Willson
Reginald and Monica Wilson
Robert W. and Alice Wipfler
Marilyn Wiseman
Stefanie Wisselman
Sarah Wohld
Michael and Leigh Woliver
Heidi Wolk
Jessica Lynn Wood
Linda Lee Woodridge



Michelle Woodruff
 J. Donald and Mary Woodruff, Jr.
 Sridevi Yadavilli
 Tina Yalen
 Sheryl Yates
 Scott and Joann York
 Anette Zarookian
 Andrew and Irene Zaso
 Jen Zimmer
 Joe Zizzo
 Michele Zuckerman

Consumer Insights Group LTC
 Cooley LLP
 Copy General Corporation
 Coral Gables Community
 Foundation
 County Christian School
 County of Loudoun, Virginia
 Devign Partners
 Dixon Hughes Goodman, LLP
 Dulles Divas LLC
 Dulles Restaurant Group, LLC
 Elden Street & Ashburn Service
 Environmental Enhancements, Inc.
 Families In Training
 Federal Home Loan Mortgage

M Powered Strategies Inc.
 Madison Wealth Management
 McCandlish & Lillard P.C
 McGraw Foundation
 Mid-States Title
 Middleburg Bank
 Middleburg Physical Therapy
 Mitchell & Co., P.C. CPA
 Morgan Stanley
 Morgan Stanley Smith Barney
 Nader Family Foundation
 New York Community Trust
 Northside Youth Football, Inc.
 NOVEC

Federated and Matching Gifts

America's Charities
 AOL YourCause, LLC Trustee
 Bank of America Matching
 Gift Program
 Gartner Matching Gift Program
 TRUIST

Corporate, Foundation, and Organizational Gifts

Akin, Gump, Strauss, Hauer
 & Feld L.L.P.
 Arms Wide Open / The Truth 365
 Backflow Technology LLC
 Banana River Storage
 Bast Flooring Company, Inc
 Belmont Station Elementary School
 PTA
 Bennett Health Inc.
 Blue Tree Digital
 Bowles Rice
 Brambleton Group LLC
 Broad Run High School
 Burger 21
 Cary T. Birkitt, DDS, Ltd.
 Cascades Center for Dental Health
 Chiseled Images
 Claude Moore Charitable
 Foundation
 Community Foundation for
 Northern Virginia

Corporation
 Fidelity Charitable
 Fun World, LLC
 Genetics & IVF Institute
 Girl Scout Troop 840
 Gray Vintage
 Happy Feet NOVA
 House Of Style II
 (Amanda S. Brotherwood, Inc.)
 ImpactAssets
 Incapsulate, LLC
 Independent Insurance Center
 Independent Project Analysis
 Inspirational Journeys, LLC
 Institute of Performing Arts
 for Youth, Inc
 Intact Technologies
 Jamberry Nails
 Jewish Communal Fund
 John Marshall Bank
 Junior Woman's Club of Loudoun
 Jr. Elite Fitness, LLC.
 Kelly E. Morgan, DMD, MS, PC
 Kettermans Jewelers, Inc.
 Langhorne Custom Homes
 Little River Inn
 Long & Foster Chantilly
 Loudoun County Chamber
 of Commerce
 Loudoun County Public Schools
 Loudoun Volunteer Caregivers
 Lulu Press Inc.

O'Shaughnessy Hurst Memorial
 Foundation
 Potomac Station Tiger Den, Inc.
 Project Horse, Inc.
 Prosperity Home Mortgage LLC
 QMT Associates, Inc.
 R. W. Murray Co.
 Re/MAX Gateway LLC
 Reston Limousine
 Run for Jaime Foundation
 Rust Foundation
 Schaufeld Family Foundation
 Schwab Charitable Fund of
 Mike Smiley
 Team Gavin
 The Amy-Jo Hendrix Trust
 The Arthur Vining Davis
 Foundation
 The Erdle Foundation
 The Rust Foundation
 The Wyatt Foundation
 Toth Financial Advisory
 Corporation
 Travelers Community Connections
 Washington Redskins
 Charitable Foundation
 Wegmans Food Markets
 Wells Fargo Foundation
 Wheeler Family Foundation
 Willowcroft Farm Vineyards
 You Can Change the World, Inc.

Please accept our apologies for any listing omitted or incorrectly stated. We make every effort to accurately reflect our donors. Please contact us so we may correct our records.



Nonprofit Initiative monthly meeting coordinated by the Loudoun Chamber of Commerce, Co-Chaired by Jamie Pearson and Amy Owen



Grantees and staff leaders of the Loudoun Impact Fund at the annual grantee and donor reception



Community Foundation Board leaders and friends joined the Smashing Walnuts Gala, a component fund with the Community Foundation



Community Foundation Board President Kirsten Langhorne joined a Chamber panel at the Loudoun County Board of Supervisor candidates' forum



The Community Foundation ended the year with kudos as a Loudoun Chamber of Commerce finalist for the Nonprofit of the Year



Golf and Philanthropy benefitting the Community Foundation, this special Skills Challenge was great fun and included winner Elaine Burden



100 WomenStrong's annual donor and grantee reception

It's a Family Affair



As kids, the Herbert children saw both Mom and Dad always active as volunteers and leaders throughout the community, working to make a difference. As they became adults, Jim and Betty's children wanted to create an endowed legacy to honor their parents love and service to the community, especially while they were both alive to share in the process and see the benefits.

Each of the five siblings saw the ease and effectiveness of creating an enduring donor advised fund with the Community Foundation for Loudoun and Northern Fauquier Counties. Each sibling made a contribution to get the fund "seeded," along with gifts from Mom and Dad. A beloved Aunt tithed in, too.

The Herbert family is deeply rewarded each year when grants are distributed to causes they all care about. Seeing Mom and Dad receive such joy that these charitable grants offer, made in their honor, doubles the satisfaction.

Family members continue to make contributions into the fund, no matter where they live. And, at the passing of Jim Herbert at age 95 in 2013, scores of friends and family paid tribute to his life and all of his accomplishments with memorial gifts into the Jim and Betty Herbert Family Fund.

The Jim and Betty Herbert Family Fund. For Good. For Ever.



(540) 687-5223 | (703) 779-3505 | CommunityFoundationLF.org
Post Office Box 342, Leesburg, VA 20178 | Post Office 402, Middleburg, VA 20118
Executive Director Amy Owen - Amy@CommunityFoundationLF.org