

2018 Report to the Community



Looking Forward
Giving Back

Looking Forward Giving Back

Our Mission is to Grow Community Giving



Excellence. Accountability. Impact.™

2019 Board of Directors

- Tracey White, Chair
- Paul Siker, Vice Chair
- Teresa Minchew, Secretary
- Sohaib Tayyab, Treasurer
- Kirsten Langhorne, Immediate Past Chair
- Janelle Brevard
- Matt Durham
- Kim Evans
- David Hathaway
- Andy Johnston
- Connie Moore
- Rajan Seth
- Tara Trout
- Lucky Wadehra

Contents

The Work We Do.....	4
2018 Highlights.....	5
Creating a Personal Legacy	6
20 Years of Philanthropy	8
Private Foundation versus a Donor Advised Fund	10
2018 Financial Snapshot	11
Our Grantmaking Funds	12
2018 Philanthropists.....	17
2018 Grantmaking	23

Staff

- Amy E. Owen, President
- Nicole Acosta, Director of Grants and Nonprofit Programs
- Candida Botts, Operations and Financial Services Assistant
- Joan Molchan, Controller
- Pam Maroulis, Managing Director, Loudoun Community Cabinet
- Lisa Shaw, Outreach Coordinator, Smashing Walnuts
- Pam Ray, Managing Director, 100WomenStrong

Dearest Reader,

This year's *Report to the Community* is a tribute to 20 years of commitment and work in the community we serve—and all who have added their vision and passion to get us here today. That includes you.

As we carry on our mission to grow community giving throughout time, this is a moment to express our appreciation for the philanthropic vision of our donors. We value and steward their generosity. Thank you to the nonprofit organizations that aid, educate, support, and help so many. We honor the passion they bring to their diverse causes.

Giving back is what makes this community strong and ready for the future. It also binds together our varied partnerships within the community and throughout the region, fuels our role as local grantmakers, and distinguishes our leadership work. Thank you for each gift you make here at home.

Looking ahead, this is also a moment to celebrate the future. Our newly founded Claude Moore Nonprofit Training Center and Community Foundation offices stand as a testimony of our ever-present commitment to earn the trust of our grantees, donors, and partners by continuing our goal to make our home—your home—one of the very best to grow up and grow old.

Come visit, soon. Until then, thank you always.



AMY E. OWEN

President



TRACEY WHITE

Chair



Community Foundation office and Claude Moore Nonprofit Training Center at 714 East Market Street, Leesburg

The Work We Do



More than just grantmakers, our call to action is to build partnerships that help build the strength and quality of life in our community. We take on leadership challenges that help to make our community unique, special, and treasured. We thank our corporate supporters and community investors that support our work and many programs, including our annual Philanthropy Summit, pictured here.



Give Choose

Twenty-four hours equals \$278,448 in charitable giving when it comes to Give Choose 2018. Local nonprofits joined in to create their own "crowdfunding" campaign offered each May by the Community Foundation at GiveChoose.org. Residents showed their appreciation for the variety of charities offered by choosing a charity of their choice and making a gift.



Social Impact Institute

When you invest in the skills, capacity, and competency of staff, the organization benefits. That's the vision of the Community Foundation's Social Impact Institute offering personalized training for local nonprofit executives. In 2018, the program renewed its leadership development through executive coaching for nonprofit leaders.



Forward Turn

Funded by our endowment fund, S. Murray and Mary H.C. Rust Student Philanthropy Project, participants from the Loudoun County Youth Advisory Council join Forward Turn for this annual program empowering youth to read grants submitted, interview finalists, and make tough grant choices faced by every philanthropist.



Philanthropy Summit

Convening our community around needs and solutions brings together grantmakers, philanthropists, government, nonprofit organizations, and businesses. Our 2018 Philanthropy Summit featured Health, Substance Abuse, Teen Health, and Behavioral Health.



Nonprofit Academy

In partnership with the Loudoun Chamber of Commerce, the Community Foundation coordinates the Nonprofit Academy's annual series of workshops to benefit local nonprofit leaders and executives to build knowledge in human resources and finance, outreach and marketing, and fundraising.



Faces of Loudoun

Have you met Shirley? Or Nick? Or Michoale? Real people. Unexpected stories. Right here in Loudoun. The Faces of Loudoun introduces you to your neighbors in need through personalized stories at FacesofLoudoun.org. From hunger, to mental health struggles, to physical health, to domestic abuse—it is important to recognize we do have need here at home and to support the charities that serve, aid, and educate in our community.

2018 Highlights



Amy Owen was named Entrepreneur of the Year by the Loudoun Chamber of Commerce, a first for a nonprofit leader based on the varied and innovative programs in our community to grow charitable giving and strengthen the nonprofit community.



The Community Foundation's compliance with rigorous U.S. Standards for Community Foundations was first achieved in 2008 and renewed in 2019.



The Community Foundation welcomed a first grant director with the advent of Nicole Acosta joining the team in July 2018 as Director of Grants and Nonprofit Programs.



Working closely with the Loudoun Human Services Network and County of Loudoun, the Community Foundation provided service and coordination of a newly emerging and county-wide Human Services Strategic Plan.

2018 Sponsors

100
WOMENSTRONG

Claude Moore
CHARITABLE FOUNDATION

LoudounNow

**KAISER
PERMANENTE®**

**WELLS
FARGO**

Loudoun Times-Mirror

**BACKFLOW
TECHNOLOGY, LLC**

alphagraphics®

**Middleburg
Bank**
Neighbors You Can Bank On.™

TOOTH FINANCIAL

**Middleburg
Eccentric**

INOVA®

StoneSprings Hospital Center
HCA Virginia Health System
An HCA affiliate

**First
Citizens
Bank** forever first

**LOUDOUN
CHAMBER**
1968 • FIFTY YEARS • 2018

ONE HOUR
HEATING & AIR CONDITIONING®
Always On Time...or You Don't Pay a Dime!

**Sandy Spring
Bank**
From here. For here.

Creating a Personal Legacy

This is About You

Your fund is a reflection of your values and philanthropy. From animal welfare, to human services and health, to youth and elderly, to specific charities you support, we can make it easy and rewarding. **Are you thinking about setting up a charity or foundation? Talk to us first.** We can help you understand the current nonprofit sector. And, we may serve as an excellent vehicle for your vision. We will work with you to answer the following questions to help determine when starting a Fund or Foundation with us is the right path.

Define Your Charitable and Financial Objectives

Consider how you want your gift to be used, whether you want future family members involved, and how much involvement you personally want in making grant recommendations.

Choose a Name For Your Fund

Many donors choose a family name, but you can use any name that is meaningful to you.

Determine Which Assets You Will Use to Create Your Fund

Gifts of cash, securities (publicly traded or closely held) or real estate can be accepted by the Community Foundation to set up a fund. Assets with a low-cost basis are often wise choices, since they offer maximum tax advantages: You pay no capital gains tax and receive a favorable income-tax deduction. You may also wish to review assets inside your retirement plan for possible charitable use. If you wish, we will work closely with your accountant and attorney to ensure your charitable wishes are clearly understood and applied.

Consider The Type of Fund That Matches Your Interests

Our staff will help you identify what type of fund fits your vision! It may help, though, to understand how broad and flexible we can be as a giving vehicle with our array of donor crafted funds.

Make Your Gift to the Community Foundation

While your gifts to establish a fund will be commingled with other Community Foundation assets for maximum investment benefits, income and appreciation are specifically tracked and tied to your fund, benefiting your fund for its growth and charitable grantmaking.

Make a Gift Through Your Will

Appropriate language to make sure your will meets legal and tax criteria is available. Just ask!

Acorn Fund

Many of our philanthropists start a new fund by creating an acorn fund, building to the endowed level of \$10,000 over a 5-year period (\$25,000 for scholarship funds). An initial gift of \$2,000 (\$5,000 for scholarship funds) or more is necessary to “seed” any of the funds below. And, many of our acorn funds build endowment while also granting funds immediately.

Field of Interest Fund

This type of fund allows you to target an issue of need, rather than a specific charity. Grants are made to organizations that meet a cause or specific need. You define the “area of interest,” and grantmaking follows.

Donor Advised Fund

Donor advised funds closely mirror private family foundations, but they offer significant advantages. A donor advised fund allows you to enjoy ongoing, even day-to-day, involvement in the distribution of your gifts from your fund. You bring specific grant recommendations to the Community Foundation for consideration. Learn more on page 10.

Designated Fund

You may name a specific charity to benefit from your gift or numerous specific charities to receive an annual grant. Should a designated organization cease to exist, the Community Foundation has the responsibility and authority to reallocate grants to another agency that most closely reflects your original vision.

Agency Fund

Charities often wish to create long-term endowments to benefit their mission and purpose. The Community Foundation provides an excellent vehicle to ensure endowment gifts are carefully and diversely invested and managed.

Scholarship Fund

You may choose to dedicate a fund’s purpose entirely to helping students study and advance their education. The Community Foundation works with community volunteers to interview students and make award recommendations or we can work with you to form your own Board-approved selection committee.





Giving Circle Fund

Many of our funds are created by a collective vision of multiple donors, who each tithe into a “giving circle,” and then, together, make grant recommendations. Giving circles are a fantastic way to learn more about your local community and its charities and increase impact as each grant is amplified in size.

General Fund

A gift to establish a general or unrestricted fund helps meet the changing needs of your community, now and in the future. General funds broadly support the wellbeing and vitality of our community.

When you establish a general fund, you leave decisions about the use of your gift to the Community Foundation, trusting the Community Foundation’s knowledge and reach to determine what needs are most pressing.

Shell Fund—Planned Giving

The Community Foundation is available to work with you and your financial advisors to set up what we call a “shell agreement.” A shell agreement is a nonbinding agreement that specifies how your planned gift shall be used once it is irrevocably received through your will or other planned-gift instrument.

In the shell agreement, you name your fund, outline your charitable vision, and decide whether donor advisors or the Community Foundation Board of Directors will recommend future grants. Gifts received from your planned gift will be placed into your fund exactly as you have named and designed it. We handle all future administrative details. When you create a planned gift using a shell agreement, revisions are easy, quick, and free. Just get in touch with us.

Corporate Advised Funds

Corporations often are overwhelmed with requests for charitable gifts. Many corporations across America look to their local Community Foundation for a simplified, focused giving program, administered by Community Foundation staff. A corporation can establish a corporate advised fund applying personalized guidelines for grantmaking. Or, it may elect to give the Community Foundation full discretion over disbursements.

Transferring a Private Foundation or Trust Fund

A private foundation can be a great vehicle for charitable giving, but sometimes the process of managing the foundation’s legal affairs can diminish the joy of giving or become a burden to maintain. Existing private foundations or charitable trust funds can be easily rolled over to a named endowment fund within the Community Foundation, greatly reducing administrative overhead, while maintaining key elements of donor involvement and long-term, legacy vision. The disadvantages of private foundations or trusts—excise fees, administrative fees, lesser tax benefits, and due diligence administration—cause many to seek a more flexible alternative through the Community Foundation.



To learn more, contact
Amy Owen,
amy@communityfoundation.org
(703) 779-3505
ext. 1

Community Foundation:

July 1999 Launched as Piedmont Community Foundation, first **Board of Directors** meeting called to order. Original Board: President Tim Dimos, Vice President Bob Chirles, Secretary Susan Jane Stack, Treasurer Joe Boling, and Board Members Linda Stanard, David Hartley, and Stuart Brown.

2004 Endowment for the Community created, a first **Unrestricted Endowment** fund



2006 S. Murray and Mary H.C. Rust Student Philanthropy Project Endowment, a first **Field-of-Interest Endowment** fund, created launching the Forward Turn Student Grantmakers program

2004 Grantmaking since inception exceeds **\$500,000**

1999 First grants made totaling \$8,400 distributed to eight charities



2006 First **Donor-Advised** fund created, the Charles Tiffany Richardson Family Fund

2008 In compliance with **U.S. Community Foundations National Standards**

100 WOMENSTRONG

2008 First **Giving Circle** created—100WomenStrong

1999 2001 2003 2004 2005 2006 2008 2011



2001 First **Designated Endowment** fund established to benefit the Loudoun County Juvenile Detention Center

2003 Fresh Air-Full Care is incubated within the Community Foundation



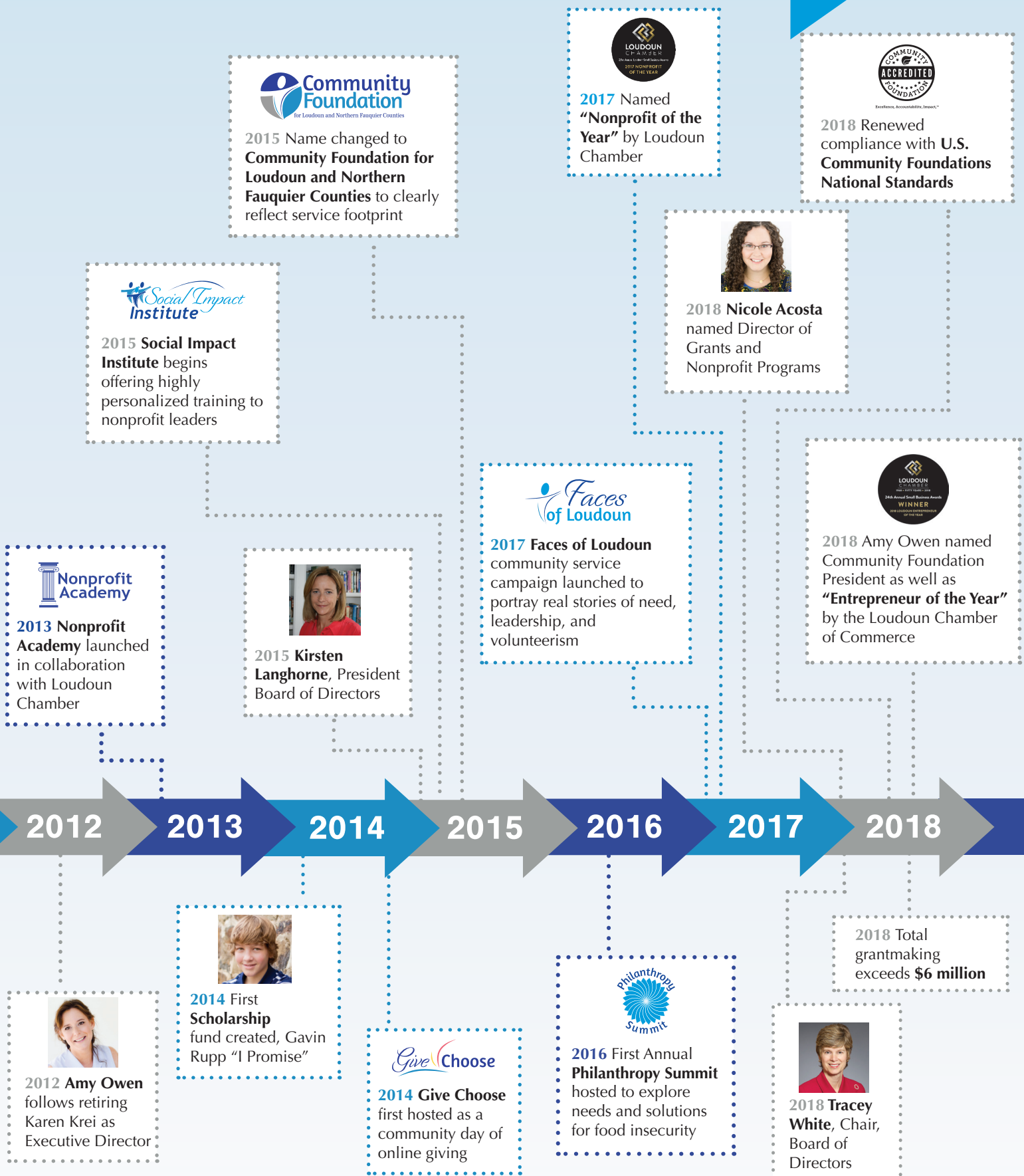
2005 Karen Krei named Executive Director



2005 Brad Davis President Board of Directors

2011 Grantmaking since inception exceeds **\$1,000,000**

20 Years of Philanthropy



Private Foundation vs. Donor Advised Fund

ELEMENTS	DONOR ADVISED FUND WITH US	PRIVATE FOUNDATION
START UP CONSIDERATIONS		
Cost	None	Incorporation fees, legal fees, accounting fees
Timeframe	Paperwork approved within days	Generally months to one year for final IRS approval
Financial Limitations	Considered endowed at \$10,000 (\$25,000 for scholarship funds)	Most experts recommend at least \$2 to \$5 million
TAX DEDUCTIBILITY		
Cash Gifts	Up to 60% of Adjusted Gross Income	Up to 30% of Adjusted Gross Income
Publicly Traded Securities	Fair Market Value up to 30% of Adjusted Gross Income	Fair Market Value up to 20% of Adjusted Gross Income
Real Estate and Closely Held Stock	No payout requirements. However, donor can distribute far more than 5% if wished!	Required annual payout of at least 5% of assets
INCOME AND REPORTING CONSIDERATIONS		
Tax Status	We are a 501(c)(3) public charity	A 501(c)(3) private charity
Excise Tax on Investment Income	None	Up to 1.4% various taxes on net investment income
Tax Filings and Financial Audit	All inclusive under our filings	Must prepare and file Form 990 PF, state filings
PUBLICITY		
Donor	Donor can receive optimal publicity OR choose total anonymity	Donors are publicly cited on Private Foundation Tax Return published on Guidestar.org
ADMINISTRATION		
Grants Due Diligence	Grants due diligence, laws, and regulations closely monitored and adhered to. Staff help to identify, investigate, assess grantees.	Must stay abreast of current laws; perform adequate due diligence of grantees and distribution rate
Investment Management	Benefits from our oversight and management, following a written investment policy	Responsibility of trustees
DONOR INVOLVEMENT		
Documentation	Fund agreement provides flexible approaches, including donor involvement in annual grant recommendations	Donor and/or private foundation board controls
Scope	Advisory as protected and restricted by the fund agreement	Full legal control and accountability
Timespan	Flexible as donor directed	Most private family foundations must seek professional oversight after three generations as family shifts, moves, loses interest
SUMMARY		
	Flexibility, greater tax deductions, efficient net proceeds to grantees, low administration costs, increased privacy from grantseekers, credible investment practices, knowledgeable staff, legal policies in place	Autonomous control

2018 Financial Snapshot

Yount, Hyde, and Barbour completed the Community Foundation's Financial Audit ended December 31, 2018. For a full copy, please contact us at (703) 779-3505 or visit CommunityFoundationLF.org/library.



Assets

Cash & Cash Equivalents	\$1,296,103
Gifts or Grants Receivable	\$175,000
Investments	\$4,452,418
Other.....	\$6,667
TOTAL ASSETS	\$5,930,188



Revenue

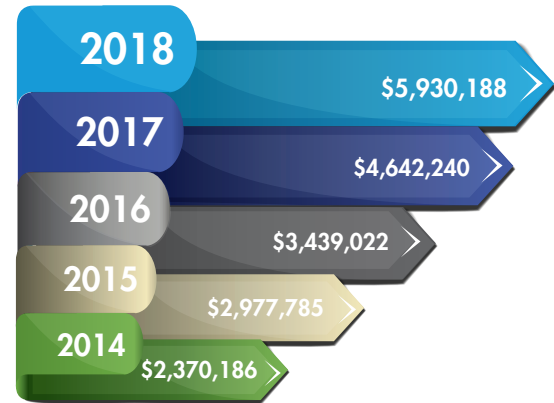
Contributions & Events	\$3,118,860
Investment Income Net.....	(\$306,860)
TOTAL SUPPORT & REVENUE	\$2,812,000



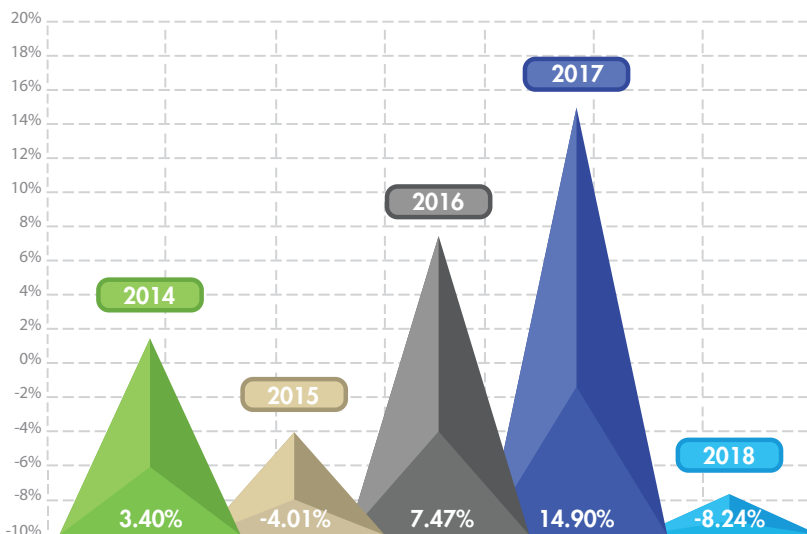
Endowment Funds

Unrestricted Funds	\$278,014
Agency Funds.....	\$378,270
Designated Funds	\$932,593
Field of Interest Fund.....	\$1,310,716
Donor Advised Funds	\$1,999,785
Scholarship Funds	\$687,753

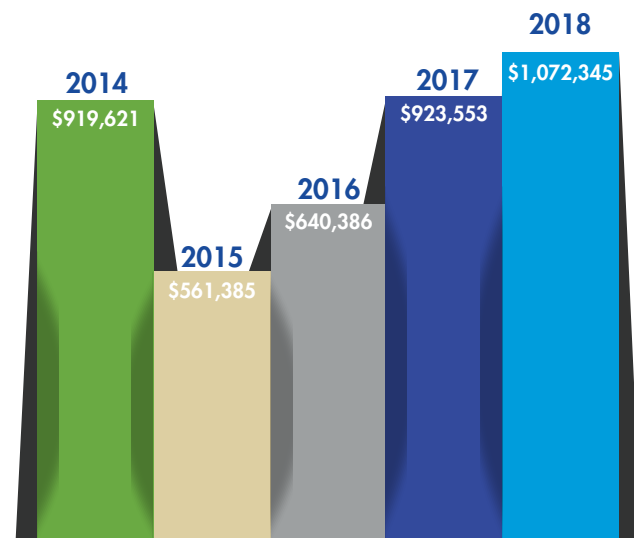
Assets



Investment Rate of Return



Grantmaking



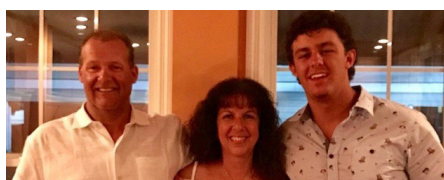
Our Grantmaking Funds

Each fund reflects the charitable values of its founder. The Community Foundation is a broad, flexible vehicle for personalized philanthropy and endowment. Won't you join us?

100 WOMENSTRONG

100WOMENSTRONG

A community collaborative among some of the region's most influential women (and a few good men), donors of this giving circle support five varied funds in the Community Foundation to further needs in education, shelter, hunger, and health in Loudoun County.



BARBE FAMILY FOUNDATION

This donor advised fund builds a legacy of family giving here at home.



CHARLES TIFFANY RICHARDSON FAMILY FUND

After his death, his daughter wanted to do something special in his memory. Mr. Richardson loved history and the environment. Grants from this donor advised fund reflect his values.



ALL AGES READ TOGETHER

Working with disadvantaged children who have little or no literacy experience, this fund supports All Ages Read Together's mission to offer programs to spark a love of reading and improved academic outcomes.



BENEFIT LIVE

Inspired by local community musicians and philanthropists, BENEFIT Live makes grants to organizations providing safety-net, health, and human services serving Loudoun County.



COMMISSION ON WOMEN AND GIRLS

The fund and its many donors seek to provide grants and programs that bring awareness and public education to such issues facing women and girls in Loudoun County as cyber bullying, STEAM education, careers for women, human trafficking, and sexual and domestic abuse.

BILL AND VAL TILLET FOUNDATION

As donor advisors to their fund, grants are made to the causes that speak to their heart and charitable values.



BLUE RIDGE HOSPICE ENDOWMENT

This agency endowment provides annual support for its meaningful end-of-life programs and operations in the community.



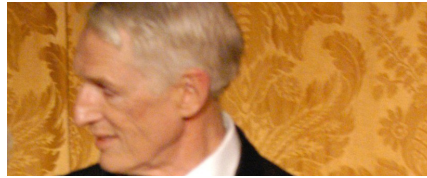
DEBBIE SETTLE SCHOLARSHIP FUND

Students on the path to music performance or music education benefit from this fund that lovingly memorializes Debbie Settle and her renown work as choral director at Stone Bridge High School.



DESI GIVING FUND

As an emerging giving circle, members work together to provide grants through collaborative vision.



FREDERICK L. SPENCER, JR. MEMORIAL FUND

This field-of-interest fund, created in memorial, supports area programs in arts, music, and drama.



THE GOLLOBIN FAMILY FUND

This designated fund supports musical programs offered by the Waterford Concert Series.



DON AND AMY OWEN CHARITABLE FUND

As a donor advised fund, grants are recommended by the founders to benefit local and national charities that appeal to their personal philanthropy.



FRIENDS OF BLUE RIDGE MOUNTAINS ENDOWMENT FOR ENVIRONMENTAL EDUCATIONAL ACTIVITIES

This agency endowment fund, inspired by the memory of the late Jane Pratt, provides funding for youth education in environmental mountain stewardship.



THE HILL SCHOOL ENDOWMENT FUND

As an agency fund, annual distributions support the success and advancement of The Hill School.



Empowering Individuals for Life

ECHO ENDOWMENT FUND

Created as a permanent resource, the ECHO endowment fund supports this nonprofit's mission to provide transportation, employment, learning and independence, and medical care for members of our community who are mentally and physically disabled.



GAVIN RUPP "I PROMISE 15" SCHOLARSHIP FUND

In honor of the late Gavin Rupp, scholarship awards support students pursuing a degree in healthcare services, with an emphasis in oncology.



JIM AND BETTY HERBERT FAMILY FUND

This donor advised fund includes multiple family members who make grantmaking recommendations from the fund to benefit local qualifying charities.



ENDOWMENT FOR THE COMMUNITY

The Community Foundation Board of Directors established this fund as a means to provide grantmaking into our community to meet the most pressing and changing needs in Fauquier and Loudoun Counties.



GiftsForGood

GIFTS FOR GOOD

Created by a coalition of organizations associated with the Loudoun Human Services Network, this fund serves as an alternative giving platform for holiday, honorary, and memorial gifts as individuals and organizations in our community wish to give a gift for good!

JOANNE W. WEBB

This field of interest fund supports melanoma research to qualified facilities and institutions in the U.S.



JOHN PAGE TURNER COMMUNITY HOUSE FUND

This designated fund offsets the maintenance costs of the John Page Turner House, a community center run by The Plains Community League.



LEADERSHIP LOUDOUN ENDOWMENT FUND

This Fund benefits Leadership Loudoun to develop current and emerging leaders to serve the good of Loudoun County.

LOUDOUN SERENITY HOUSE

The Community Foundation serves as a fiscal sponsor of this newly forming vision to address substance abuse and women in recovery.



J.T. PLACE FUND

This fund provides special support for life skills, academics, and human necessities for Loudoun County's foster children and young adults.



LOUDOUN CHAMBER FOUNDATION

Founded by members and supporters of the Loudoun Chamber of Commerce, this field-of-interest fund supports charities in Loudoun County and the economic development they bring to our local quality of life.



LOUDOUN VOLUNTEER CAREGIVERS ENDOWMENT

Created by Hospital Corporation of America (StoneSprings Hospital Center), this designated fund benefits this group's work to aid, support, transport, and care for homebound and disabled citizens.



LOUDOUN HIGH SCHOOL SCHOLARSHIP FUND

Through Henry Stower's his estate and in honor of his lifetime of farming, and community service including as a Loudoun Board of Supervisor, this fund provides a four-year scholarship to a qualifying graduate of Loudoun County High School.



LOUDOUN COUNTY JUVENILE DETENTION CENTER FUND

Created for the Loudoun County Detention Center, distributions support their programs to provide positive role models for youth incarcerated in the Loudoun County Juvenile Detention Center.



MARY TETT FUND

As a memorial to Mary Tett and her volunteerism at the Loudoun Free Clinic, this fund offers scholarship support for continued education in the medical field.



A partnership of the Community Foundation for Northern Virginia and the Community Foundation for Loudoun and Northern Fauquier Counties

LOUDOUN IMPACT FUND

As a giving circle, this fund pools donor gifts for high-impact grants into the Loudoun community.



LOUDOUN HUNGER RELIEF ENDOWMENT FUND

Founded by the Hospital Corporation of America (Stone Springs Hospital Center), this designated fund supports Loudoun Hunger Relief and its work to feed the hungry by providing emergency food assistance to any person or family living in Loudoun County.



MAY FAMILY FOUNDATION

As a donor-advised fund, grants are made to the charities near and dear to the family's charitable values.

MINCHEW FAMILY FOUNDATION

Reflecting their charitable values, this donor advised fund supports the charities and causes close to the founder's heart.



PAW (PAY IT FORWARD ANIMAL WELFARE) FUND

Caring donors and vet clinics across pool gifts to create animal welfare grantmaking.



S. MURRAY RUST AND MARY H.C. RUST STUDENT PHILANTHROPY PROJECT

This fund empowers students as community grantmakers, providing grant support to youth-driven philanthropic projects in our area through Forward Turn.



MORVEN PARK CHARITABLE FUND

This agency fund helps fulfill its mission to preserve and advance the ideals of Westmoreland Davis (governor of Virginia 1918-1922) and his wife, through programs that reflect civic-minded leadership, sustainable agriculture, and the conscientious use of open space.



PETER M. HOWARD MEMORIAL FUND

Created by the family of the late Peter Howard, this field-of-interest fund celebrates his appreciation of historic preservation and open space in Loudoun and Fauquier Counties.



SANDERS-OSCANYAN MEMORIAL FUND

This designated fund supports Loudoun ENDependence, dedicated to providing peer counseling, mentoring, and other self-help services for those with disabilities.

MOSES FUND

This donor advised fund makes grants to charities that reflect the values of its founders, Pete and Mary Hayes.

PETTIT-WILSON FAMILY FUND

This family-based donor-advised fund makes grants that mirror the charitable vision of the Pettit-Wilson family.



SHARYN'S ANGELS CANCER FUND

In memorial to Sharyn Crockett Bass, this fund supports individuals suffering from cancer and requiring financial assistance.

NEAL AND DONNA GUMBIN CHARITABLE FUND

This donor advised fund was founded by 2012 Cannonball Invitational Amateur winner, Neal Gumbin. The fund supports charities as guided by the Gumbins.

ROSEGATE FUND

The founders enjoy the grantmaking flexibility of their donor advised fund to recommend grants that meet their values and interests.



STERLING WOMEN GIVING CIRCLE

Founded by business leader Kristina Bouweiri, this giving circle invites area women to pool gifts to address local needs.



SMASHING WALNUTS FOUNDATION

This fund is dedicated to “cracking the cure for childhood brain cancer” by making distributions to charitable programs and institutions dedicated to childhood brain cancer research, treatment, and awareness.



WHEELER FAMILY FOUNDATION

Donor advised by the Wheeler Family, this fund supports charities that reflect the donors’ personal interests and charitable values.

**What could
be easier
than giving
away money?**

***Rocket science,
for starters.***



Giving away money can be tougher than you think. Use our expertise to have the greatest impact on your community and the most benefit to all of your charitable giving. We’ll make the whole process easy.

From memorial funds, to scholarship funds, to donor-advised funds, we can help you make a difference that never ends.

**Won’t You Join Us?
Call (703) 779-3505**

TACKLE BOX FUND

How to tackle the needs and solutions you see in your community? This donor advised fund does is the conduit for its founders to do just that.



WILLOWCROFT SCIENCE ENDOWMENT

This designated fund provides support to the Loudoun Education Foundation for its efforts to promote science and higher education innovation.



THREE MUSTARD SEEDS FUND

The donor advised Three Mustard Seeds Fund serves children, veterans, education, and recreation.



WINDY HILL ENDOWMENT FUND

Supporting all programs of the Windy Hill Foundation as it fulfills its mission to provide safe, decent, and affordable housing and family services to lower income families and elderly in Loudoun, Fauquier, and Clarke counties.



WEBBER JAZZ GRANTMAKING FUND

This field-of-interest fund supports local traditional jazz performances and educational opportunities for practical jazz education.



YELLOW RIBBON FUND

Created by 2012 Cannonball Invitational Amateur winner, Mark Gerencser, this designated fund offers permanent endowment funding to this Maryland-based group that provides practical support to injured service members and their families while they’re at Walter Reed National Military Medical Center, Fort Belvoir Community Hospital, and after they return to their hometowns.

2018 Philanthropists

Friends of the Foundation

The Community Foundation for Loudoun and Northern Fauquier Counties serves as capacity builders, conveners, and thought leaders to affect position change here at home. Contributors to the Friends of Foundation fuel our annual programs and operations. We pay special tribute to their investment philanthropy. Thank You!

Kate Armfield
Childs and Elaine Burden
Brad and Bailey Davis
Reggie and Kim Evans
Farang Ghadiali

David and Laura Hathaway
Andy Johnston
Will and Kirsten Langhorne
Randy and Teresa Minchew
Jim Behan and Connie Moore

Tom and Ann Northrup
Don and Amy Owen
Wallace and Deborah Owings
Lew Parker
Chris and Kiernan Patusky

Fred and Karen Schaufeld
Paul and Joanne Siker
Tim and Kiki Thompson
Hughes and Susan Webb
Mike and Teresa Wheeler

2018 Philanthropists

Julie Abel
Derek and Nicole Acosta
Gail Adams
Katharine Ahern
Becca Aitken
William Aiton
Kiana Akina
Kathy Albarado
Jennifer Alcott
Marcia Aldaghtani
Melissa Alexander
Meghan Allen
Andrea Allen
Forrest Allen
Terry and Jane Allen
Robert M. Allen
Louise Allway
Elizabeth Andersen
Cynthia Anderson
David Anderson
James Anderson
Laura Crump Anderson
Rebecca Anzelone
Andrea Apple-Robey
Howard and Gloria Armfield
Kate Armfield*
Peter Arundel
Beatrice Ashford
Michael Ashwell
Joshua and Elaine Attridge
Abi, Noah, and Johny
Attumalil
Wendy Augustine
Erin Austin
Sandra Aviles
Randy Avis
Joe Baber
Ricky Bacon
Toni Badinger
Aurora Bafnec
Ara Bagdasarian
Nancy Baker
Eve Baker
Robin Baker
Sarah Baldwin
Cynthia Ballinger
Robert L. Banner Jr.
Susan Barancewicz

Philip and Carol Barbe
Amy Barden
Lisa Barrett
Laura Barta
Ben and Suzie Bartel
Genelda Bartling
Ryan Bascom
Marlena Beach
Valerie Beaudoin
Mick Beckstrom
Jim and Connie Moore Behan*
Albert and Andi Belisle
Sherae Bell
Dawnia Bell
Jason and Sarita Belser
Victoria Bendure
Elizabeth Bennis
Danielle Beres
Carl and Courtney Bergeron
Kathryn Berkheimer
Hillary Berman
Carolyn Berrigan
June Berthelsen
Debra Jo Bevan
Larry Bevis
Robin M. Birchfield
Chuck Birdie
Franklin and Alison Black
Brenda Black
Dejauna Black
Michael Blank
Debra Blaskoski
Barbara Bloom
Harold Boardman
Amy Bobchek
Cyndie Boehm
Robert Boetig
Julia Boland
Donna Bongiovanni
Grace Bonham
Morgan Bono
Julie Borneman
Lisa Boslett
Tanya Bosse
David and Amy Bosserman
Jon and Jill Lindsay-Bost Bost
Candida Botts
Jessica Boulterice

Thomas Bove
Anthony Bowers
Sara Bowie
Tom Bowman
John Bowne
Christine Bowser
Marina Bradfield
Page Bradley
Leighann Brandt
Denise Bratcher
Martin Braunstein
Janet Braveman
Brie Breland
Autumn Brennan
Colleen Breuning
Kim Brewer
Brian Brezovsky
Martha Briggs
Juli Briskman
Deborah Brooks
Lynn Brooks
Joel and Sheryl Brotman
Margaret Brown
Alexis Brown
Misty Brown
Natalie Brown
Sheri Brown
Ruth Brown
Matthew Bruneau-Richardson
Mary Bruno
Jeannette Buehler
Childs and Elaine Burden
Brett and Kimberly Burk
Amy Burns
Susan Fitzgerald Burridge
Sandra Burrill
Marilyn Burroughs
Susan Butler
Jackie Butler
Vicki Buttarazzi
Cris Butts
Candi Byrne
Julie Landrio and Irene Cahill
Patty Cake
Martha Calihan
MG Camarillo
Martha Cammack
Jessica Campbell

Sarah Campbell
Lindsay Campbell-Reidhead
Luis and Carolina Camps
Christopher and Christen
Canary
Paul Candaux
Corinne Cannon
Kristine Cardell
Elyse Cardon
Tami Carlow
Kristin Carlson
Myrna Carr
Devin, Xavier, Solitaire,
Tre, Jeffrey, and Solitaire
Carroll
Laura Carter
Gena Casagrande
Nancy Casares
Lori Cascio
Monica Casey
Dawn Cassidy
Alfredo Casta
Raul Castillejos
Ellen Catena
Jill Cazares
Kenneth Chaletzky
Robert Chamberlin
Charles and Barbara
Chambers
Carolyn Chandler
James Chapman
Chris Charron
Margaret Chen
Gloria Chepko
Rhonda Chester
Deirdre Chevrier
Kelly Chi
Ann Chopivsky
Heather Chou
Charlotte Chow
Clara Christensen
Eric Christian
Catherine Christopher
Siva Chundru
Adriana Church
Maria Ciarrocchi
Chris Cicotello
Tom Ciolkosz

Dana Clark
Edward Clark
Edye Clark
Lorna Clarke
Jeff Clayton
Maria Clemens
Danielle Cloakey
Amanda Clothier
Harriet Clubb
Linda Coffey
Rachel Cole
Karen Coleman
Joe Coleman
Patricia Colohan
William Colosimo
Linda Colucci
Barbara Comstock
Cheryl Conca
Nicholas and Linda Connolly
Diane Connolly
Dana Connor
Christy Conolly
Courtney Conroe
Megan Constantinides
Cheryl Coogan
Angelle Cook
Maryann Cook
Jennifer Cook
Michael and Meribeth Cooper
Candace Cooper
Mary Elizabeth Cornejo
Deborah Corry
Joan Coullahan
William Cour
Alyssa Coutry
Michael Cowell and Patti
Psaris
John Cox
Robert and Frances Craig
Jill Crane
Jan Cranston
Akil Crawford
Faith Crawford
Betsy Creamer
Kelly Cregan
Natalie Crews
Shannon Crocker
Matt Cromwell

Sally Crosen
Carolyn Cross
Beatriz Cuartas
Frances Cubelo
Holly Cunningham
John Currie
Laura Currier
Robert Cusack
Harriet Cutshall
Abigail Tiller Cutter
Scott and Susan Cypher
Janine Czarnecki
David D'Onofrio
Denise Daffron
Amy Dagliano
Coleen Damalouji
Allan and Marilyn Daniels
Jim Daniels
K Daniels
Katherine Daniels
Charles Daniels
Nikki Daruwala
Michelle Das
Tamar Datan
Roy A. and Anne Davenport
Heather Davies
Brad and Bailey Davis
Shannon Davis
Doris Davis
Nancy Davis
Phyllis Dawson
Grafton deButts
Donald Dechow
Don Dechow
Amaarah DeCuir
Kelly Degan
Denis Delehanty
Brittany DelSignore
Susan DeLuca
Melissa Dennis
Anthony Denovio

Daniel and Karen Derrico
Susan Derus
Vanessa DeShane
Christine DeWitt
Harriet Dickinson
Denise Dicks
Margaret Dieter
Theresa Dinman
Alexandra Dixon
Nancy Doane
Carolyn Dobson
Joanna Dobson
Lois Dodd
Heidi Dodds
Eileen Dolan
Sheilah Dols
Scott Donahue
Michael Donatelli
Anne Donohue
Paul and Gail Donohue
Raymond Dorman
Jackie Dougherty
John Dougherty
Maite Dougherty
Nancy Dowgiello
Gail Doyle
Donna Drake
Laura Drexel
Jason Driggers
Della Drodody
Jill Drupa
Jennifer M. Du Pleissis
Dawn Dumas
Margaret Duquette
Julia Duquette
Jayendran Duraikkannan
Matt and Karin Durham
Jamie DuScheid
Kenneth Dzombar
Ronald and Patricia Eamich
Donna Earle

Juanita Easton
Allison Echard
Heather Eck
Sydney Eddison
Joseph Edward
Marantha Edwards
Mary Elizabeth Ehrhardt
Fay Eifler
Michael Eig
Chris Ekstedt
Jay El
Fatima Zahara El Khaldi
Paige Ela
Robert Eland
Caroline Elgin
Carina Elgin
Bud Elliott
Monica Ellis
Misha Green Ellis
Terry Elrod
Barb Emanuel
Chris Emery
Roland England
Shannon Englund
Beth Erickson
Joan Erikson
Melissa Ernst
Larisa Erwin
Kelly Esch
Katherine Eschle
Jenepher Esser
Melissa Estes
Richard Evans
Reggie and Kim* Evans
Jane Exner
Shahrazad Fadaei
Patrick Fadden
Lea Fadden
Amy Fagerli
Mariah and Kelsey Fairfield
John Fairfield

Nancy Farrell
Valerie Fay-Henry
Timothy and Terri Feely
Karen Feldman
Sherry Ferdinsnd
Kathryn Fetzer
Chloe Field
Kim Fields
Cynthia Fillman
Kimberly Finan
Barbara Fink
Mary Finley
Robin Finnell
Bob and Isabel Fiolek
Loralyn First
Lydia Fish
Nicole Flanagan
Melanie Fleming
Silvia Fleming
Joan Fletcher
Ashton Flora
Carol Foley
Randy Foliente
Bob Follett
Melanie Fondaco
John Forbes
Emily Fort
Carla Fortenberry
James and Linda Fortenberry
Donna Fortier
Deanna Foster
Rusty Foster
Natallia Francis
Marlena Franke
Mary Frase
Angela Fraser
Dave Frease
Daniel Freire
Lisa Freire
Ellen Frentzen
Lynne Friedman

Mary Friedmann
Jill Friedrich
A. Chris Fristad
Elizabeth Fritsche
Cecile Fritz
Gabrielle Fronce
V Fry
Stacia Frye
Brenda Fulton
Chuck Fulton
Jeffrey and Stacy Gad
Lisa Gaddy
Marian Gade
Theodore Gallagher
Nancy Gallagher
Debbie Gallo
D. Gallo
Donna Galpin
Jeneen Galvin
Clara Gannon
Ashley Gant
Kim Garcia
Jenny Garfinkle
Hyojung Garland
Judith Garlick
Tracee Garner
Ann Garvey
Tony Garvey
Jane Gaspard
Marie Gatti
Gloria Gelabert
Jim Gemmer
Elizabeth Genova
Christina Gerberick
Nicole Gervais
Laura Gethers
Farang Ghadiali
Ashleigh Ghent
Linda Giannino
Joanna Giasafakis
Elisha Gibby

Every Child Deserves a Winning Smile.



I was 10 when I left my home in El Salvador with my sister. After 2 months of uncertainty and fear, we were reunited with our parents. But, later that year, I stopped eating and sleeping because my mouth was in constant pain. I was so aware of all the cavities on my front teeth that I didn't want to smile or even talk.

No child in Loudoun should have to face a lifetime of suffering.

FacesofLoudoun.org

Real People. Hear their stories.
Unexpected Stories. Celebrate their victories.
Right Here in Loudoun. Learn how you can help.



Brian and Susan Mandel
Giblin
Betsy Gibson
Shye Gilad
Sarah Gill
Tracy Gilliam
Tanya Giuliani
Alethea Givens
Teresa Glass
Chuck Glass
Susan Glass
Penelope Gnesin
Priscilla Godfrey
Mee Goh
Bbarrly Goldin
William and Ronni Gompers
Tania Gonda
Lora Gonder
Orlando Gonzales
Shari Goodwin
Kristen Gorczyk
Christine Gorham
Stacy Gorman
Joan Gorman
Christopher Gorthy
Ellen Gossage
Katharine Gossman
Amy Grady
Susan Graham
Shannon Graney
Devin and Rachel Gray
Susan Grayson
Linda Graziano
Tag and Mary Beth Greason
Julie Grebe
Sandra Greenberg
Celia Greenberg
Jill Greene
Nahtasha Greenhill
Charli and Joe Grefenstette
Joy Griffith

Brian and Harriette Griggs
Stacy Groomes
Jackie Groves
Lejla Grozdanic
Michael Gruca
Teresa Guenther
Joanna Guest
Nina Guilford
John Guilford
Nyrlande Guilford
Shashikant Gupta
William Hahner
Rhona Haider
Gregory Haldeman
Rita Hall
Tonianne Hall
Elizabeth Halley
Shawn Halveland
Rose Hamberger
Bahar Hamidi
Dean Hamingson
Jennifer Hanes
Judy Hanley
Donica Haraburda
Ron Harding
Ashley Harper
Kira Harrell
Diane Harris
Elizabeth Hart
Bryne Hart
Suzanne Harvey
Pamela Harvey
Brandon Hassan
Maggie Hatfield
David* and Laura Hathaway
Connie Hatt
Andrew Havens
Michele Hawes
Natalie Hawkins
William and Maryann Hayden
Pete and Mary Hayes

Anna Hayes
Tamara Hayter
Joan Heath
Elizabeth Hedges
Aileen Heim
Carrie Heiman
Kate Helein
Kathleen J. Heltebran
Corina Henriques
Josephine Henry
Betsy Henry
Elizabeth Henry
Janet Hensley
Gary and Lorraine Herman
Abigail Hermes
Claire Herning
Vicki Herter
Sheldon Hervey
Elahe Hessamfar
Jason and Chelsea Hester
John and Jennifer Hickman
Kathleen Hicks
Ed Hilliard
Sheryl Hine
Judy T. Hines
Melissa Hinton
Kimberlee Hise
Rich Hixon
Cathryn Hoag
Connie Hodges
Beth Holcomb
Kathy Holcomb
Charlotte Holland
Yvonne Holland
Tanya Holliday
Lisa Holt
Leanne Homan
Stephen Hood
Earl Hoover
Catherine Hope
Becky Horne

Janice Houck
Stephanie Houseknecht
Miranda Howard
Tony Howard
Tamra Howard
Katie Howell
Lauren Howell
Daniel Hoyle
Francine Hoyle
Peter and Erika Huddleston
Elana Huddleston
Kathy Hudson
Natalie Huelsman
Melissa Hughes
Kathleen P. Hughes
Gina Humberstad
Sandra Hunter
Christopher Hussion
Rebecca Hutchings
Tina Hyatt
Gloria Ingegno
Evelyn Ingram
Laurie Ivanhoe
Audrey Izzo
David J. Jackson
Valerie Jackson
Katey Jacob
Susan Jacobsohn
Beth Jameson
Les and Michele Janka
Mary Jane Jarrett
Carleen Jarrett
Cathy Jay
Greg Jester
Helen Johnson
Colleen Brooks Johns
Billie Jo Johnson
Michelle Johnson
David Johnson
Andy Johnston*
Richard* and Megan Jollon

Amy Jones
Tracy Jones
Maureen Jones
Susan Jones
Michelle Jones
Pamela Jones
Lisa Jordan
William and Jennifer Junda
Melanie Kabat
Jeffrey and Veeree Kadan
Ellen Kagina
Allen Kaine
Sean Kalnitzky
Victoria Kalteissen
Katherine Kamerling
Robyn Kane
Richard Karcich
Teresa Karimian
Amy Karl
Lisa Katz
Leana Katz
Elyann Kauffman
Barbara Kavanaugh
Julie Kaylor
Joanna Kearney
Allison Keenan
Grace Keenan
Jaimee Keller
Curtis Kelly
Stacy Stang Kelly
Kevin Kemp
Robyn Kennedy
Maureen Kennedy
Gwen Kenney
Susan Kent
Joseph D. Kernan
Raymer Kersten
Orin and Janel Keyser
Barbara Keyser
Janel Kianpourian
Bahareh Kiefert



Medicine for Me or Food for My Family?



Every day, I have to decide between feeding my two daughters or keeping my MS at bay. As a family, we were facing real issues of food insecurity. That reality was almost unbearable for me. There seemed to be nowhere to turn, no one to help.

No mom in Loudoun should have to face such choices.

FacesofLoudoun.org

Real People. Hear their stories.
Unexpected Stories. Celebrate their victories.
Right Here in Loudoun. Learn how you can help.



Community Foundation Chair Tracey White accepts a Proclamation of Support for Give Choose from the Loudoun County Board of Supervisors

Amy Killmon	Katherine LeBlanc	Brenna MacMillin	Stamatina McGrath	Randy and Teresa* Minchew
Michael Kimball	Ellen LeCompte	Linda MacNeil	Tom McGuiggan	Richard Mitchell
Lisa Kimble	BJ Lecrone	John Magistro	Tanya McInnis	Jeff Mitchell
Maria King	John C. and Cindy Lee	Connie Mahan	Beverly McIntyre	Clair Mitchell
Yvenne King	Alison Lee	Lydia Mahan	Helen McKay	DeAnna Mitchell
Molly Kingsley	Judy Lee	Jennifer Mahoney	Martin McKee	Julie Mock
Mandy Kinne	Stephanie Lee	Marit Majeske	Ronna McKenna	Monica Mock
Heather Kirby	Meredith Lefforge	Lara Major	Sharon McKinley	Debbie Moffitt
Mark Kirk	Rebecca Lefton	James and Jennifer Mannin	Eileen McKinney	Gary and Joan Molchin
Taryn Kirk	Bob and Dee Leggett	Tim Mansfield	Meagan McKinnon	Darrin Mollett
Keith Kissal	Julie Leidig	Timothy Mansfield	Paige McLaughlin	Ashley Monroe
Claudia Kissal	Aretha Lentz	Keturah Maraska	Morgan McLaughlin	Sara Monteleone
Kirsten Kleeb	Andre Leon	William Marcellino	Rachel McLean	Chris Stephenson and Jennifer
Deborah Bindeman Kleinbord	Catherine Leonard	Jane Marinich	Patrick McMahan	Montgomery
Lisa Knapp	Raymond Leone	Pamela Maroulis	Loretta McMahan	Antoinette Montgomery
Jeffrey Knowlton	Kevin Leong	Dario and Wendy Thompson	Cynthia McNanley	Beth and Rick Shent Moore
Mark Koblos	Lai and Chee Leong	Marquez	Robert and Patricia McNeal	Marisa Moore
Sara Koch	Moon Leong	Gerard Marquis	Neil McNerney	Arch and Cathy Moore
Susan Koehler	Jackie Leventhal	Chip Marshall	David McOmber	Brian Moores
Noreen Koerner	Maggie Levis	Tim Marshall	Charlie McQuillan	Pat Moran
Christopher Kondracki	Van Lewandowski	Paul Marshall	Jim McWalters	Pat Moran
JoAnne Konik	Suede Lewis	Andy Marshall	Doreen Meadows	Tracy Moravek
Antonia Korbey	Stefon Lewis	Elaine Marshall	Gary Mears	Victoria Morillo
Jenna Korff	Gongkai Li	Todd W. Marshall	David Medinets	Megan Foley Morris
Elizabeth Korte	Kathleen Liddick	Suzanne Martin	Doug Meeker	Lisa Morris
Holly Kortright	Laura Lieberman	Donna Martin	Janel Melgaard	Geraldine Morrison
Rachel Kotraba	Sheryl Ligon	Jack Martins	Keith Mellnick	Greg Moseley
Melissa Kowalski	Jessica Lin	Eddie Mason	Roger Mello	Mark Moser
Joan Kowalski	Tanina Linden	Sonya Mason	Cindy Mellott	Jean Mothena
Sharon Kozar	Deb Lindner	Paul and Jane Mass	Jared Melvin	Adele Mouzon
Nancy Kredel	Emily Lineman	Mary Masucci	Barbara Mendoza	Waves Mowatt-Kane
Tom Kress	Suzanne Ling	Anthony Matos	Ann Menninger	Laura Moye
Candace Kroehl	Bridget Linzmeyer	Melissa Mattia	Kay Mercogliano	Dennis Moyer
Lisa Krueger	Douglas Lipp	Niki Mattson	Sherrie Merrell	Jennifer Mulaski
Amy Krzeminski	Kit Lisle	Jeffrey Mauritzen	Denise Merrell	Susan Mulholland
Pramod Kudva	Jenny Lisle	Gail May	Lori Merryweather	Thomas Mulroy
Nicole Kueck	Chang Liu	Leslie Mazeska	Stacey Metcalfe	Joann Muncy
Susan Kuehhas	Jim Lockett	Gail Mazzatenta	Allison Metzger	Caitlin J. Murphy
Gary and Ellen Kugler	Scott Loftis	Navairre Mazzeo	John A. and Dawn Mies-Keyes	M.E. Murphy
Caroline Kuhfahl	Nelina Loiselle	Mike McCabe	Amanda Miles	Esther Murphy
Susan Kumpf	Jan Lokie	Nancy McCarry	Sandy Miles	Doug Murphy
Carey Kunkle	Mary Long	Kevin McCarthy	Taryn Millar	Kari Murphy
Ernie Kyger	John Love	Sherrie McCarty	Janet Millar	Candice Murphy
Julie Kyle	Catherine Lowery	Bill McCracken	Mark E. and Ellyn Miller	Ellen Murphy
Cindy Lambert	Robert Lowry	Stephen McCrory	Ken Miller	Theresa Murphy
Cheryl Landry	Michelle Lucas	Peg McDermott	Sara Miller	Christopher and Christina
Richard Lang	Jacqueline Lutgen	James R. and Rebecca	Francine Miller	Murray
Will and Kirstey Langhorne	Tamara Luceckyj	McDermott	Jill Miller	Amy Muscarella
Patrick and Angela Larkin	Janet Lyman	Monica McDonald	Scott Miller	Peggy Musgrave
Paula Larkin	Lauren Lynham	Abigail McDonnell	Holly Miller	Brooke Myatt
Jack Lawlor	Robert Machrr	Ruth McElroy	Casey Segal Miller	Jim Nagel
James Leader	Talbot and Catherine Mack	Lisa McGrail	Susan Mills	Stephen Nally

Theresa Nang	Ursula Pfeil	Rodriguez	Len and Nan Dawkins Shaefer	Cynthia Sullivan
Carole Napolitano	Patty Pierleonardi	Ron Rogos	Sandy Shaffer	Karl Sweedy
Lama Nassar	Bob and Annette Pizzimenti	David and Carmen Rohrbach	Eileen Shaffer	Tom D. Sweitzer
Diane Nastase	Stephanie Place	Lori Roll	Noel Shatananda	Jeanne Swisher
Lorilie Neckel	Linda Platt	Leigh Roller	Lisa Shaw	Mary T. Swiss
Carol Nees	Patty Plombon	Janet Romanchyk	Jennifer Shea-Roop	Janet Taliaferro
Stephen Nerangis	Patricia Politte	Catie Romano	Steve and Kristine Sheets	Amanda Tamminga
Beth Newberry	Martha Polkey	Michael Ronay	Kit Sheffield	Hector Tapia
Sarah Newland	Rajeev Poluri	Joan Rooney	Eric Shenton	Kim Tapper
Leviticus Newton	Cathleen Porter	Luis and Jeanise Rosado	Lisa Sherman	Linda Tarrall
Phuong Nguyen	Serena Porter	Michelle Rosati	Renate Shields	Allison Taylor
Al Nielsen	Mildred Porter	Gerald Rose	Leslie Shigaki	Frances Taylor
Suzanne Nixon	Cyndy Porter	Wendy Roseberry	Chris Shipe	Sohaib* and Tanzi Tayyab
Bernadette Nolan	Christopher and Linda Pousson	Janine Rosen	Anne Shively	Laura Tekrony
Siva Nookala	Maria Poweilk	Pamela Rosenblum	Elizabeth Shockley	Audrey Tennant
Jill Norair	Barbara Powell	Kimberlie Ross	Julie Short	Lori Ann M. Terjesen
Dave Norman	Linda Powell	Lisa Ross	John and Linda Sichenze	Lena Terry
Tom and Ann Northrup	Kristina Preston	Erica Rowe	Julia Siegel	Brian Tesene
Melissa Notargiacomo	Steve and Diana Price	Gerald and Lynn Rubin	Paul* and Joanne Siker	Cassandra Tesh
Renee Novello	Taylor Price	Mindy Rubin	Kathy Silberberg	John Tett
Sharon Nylec	Jason Price	Steven Rubloff	Michelle Simon	Maifoua Thao
Carla O'Brien	Wayne Propst	Rasanayagam Rudran	Maryann Simpson	Dana Theriot
Cheryl A. O'Connor	Steve Proulx	Alexis and Cynthia Russell	Lorin Simpson	Elizabeth Thoet
Jack O'Donnell	Laura Przepyszny	Mark and Katherine Russell	Katie Simpson	Anne Thomas
Cathy O'Mara	Alexandra Psaris	Sue Russell	Ekta Singhal	Brenda Thomas
Rose O'Mara	Jett Psaris	James Russell	Frances Sip	Michelle Thomas
Anna O'Neill	Leigh Psaris	Karen Russell	Dana Skaddan	Cindy Thomason
Allyson O'Sullivan	Jason Pubal	Alex Russomanno	Kelly Skahan	Tim and Kiki Thompson
Katja Obstgarten	Amanda Queen	Conor Russomanno	Margaret Skelley	Pauline Thompson
Laura OConnell	Bradley and Elizabeth Quin	Sean Russomanno	Seymour Slatkin	Victor Thornton
A O'Hara	Suzy Quinn	J. Rust	Catherine Slichter	Bill and Val Tillett
Brice Ohara	Rosa Quintana	Ann Rust	Jane Smeltzer	Ryan Tillman
Elizabeth Olivero	Neremann Qureshi	Bethany Ryan	Jennifer Lassiter Smith	Heather Timer
Siew Ong	Lia Radziewicz	Megan Ryan	Sharon Smith	Kristen Tiscione
Andrea Orr	Paula Ralph	Lise Rybowski	Matthew Smith	Madeleine Tobias
Amy Orr	Maria Ramos	Tracey Salas	Daniel Smith	Mary Tondreau
Julie Overman	Mia Rampersad	William Salzmann	Emma Smith	John and Nicole Tong
Don and Amy Owen	Judith Randal	Michael E. Sandler	James Snyder	Donna Torraca
Acadia Owen-Bender	Phyllis Randall	Colleen Santelli	Martha Soath	Brigitta Toruno
Carol Owens	Hannah Randall	Douglas Sargent	Jane Soderquist	Tom Toth III
Wallace and Deborah Owings	Amit and Priya Rastogi	Jaymie Schaffer	Carla Sola	Leslie Tracy
Beth Palma	Elizabeth Ratchford	Holly Davis Schalow	Lynne Sorrentino	Monica Tressler
Laura Paolinelli	Susan Rau	Fred and Karen Schaufeld	Alison Sowers	Wes Trochlii
Philip Parchman	Darren and Pam Ray	Barbara Schaufeld	William Spath	Aimee Tucker
Jacqueline Parchman	Steven Raymond	Cindy Schaufeld	Joel Spenadel	Michael Tucker
Catherine Parker	Dave Redabaugh	Rebecca Norris Schendel	Jody Spencer	Rugiatu Turay-Cathcart
Robin Parker	Jennifer Reed	Justin Schmidt	Brawn Sproul	Miriam Turner
Tracy Parker	Diane Reed	Melanie Schmidt	Richard and Diane Squires	Michael Turner
Lew Parker	Kristen Reed	Kurt Schneid	J Douglas and Pauline Stallard	Kathleen Tye
Richard A. Parks	Kevin and Jennifer Reichard	Faith Schneider	Laura Stallings	Jonathan Tyler
Yvonne Parrotte	David Reid	Elizabeth Schnelzer	Suzanne Stallings	Jennifer Tyler
Sharon Parsons	Theresa Reisenfeld	Cathy Schonder	John Stanford	Bill and Jennifer Tyrrell
Kimberley Partoll	Martha Reitman	Elizabeth Schoolmaster	Elizabeth Stankard	Lawrence Uman
Philip Paschall	KC Repage	Mary Schoolmaster	Barbra Stanley	Jeff and Melodie Unger
Kate Passow	Dana Reuter	Mary Schopper	Colette Stanzler	Cindy Unkefer
Tara Patterson	Carla Rhoads	Beeta Schoppet	David Starling	Susan Urban
Remy Patterson	Margaret Rice	Jennifer Schroeder	Jeffrey and Sarah Steadman	Vani Valluru
Sally Patton	Diane Rice	Patricia Schwab	Darren Steadman	Daphrie Van der Woude
Landey Patton	Deborah Rice	Cynthia Schwalbe	Carter Steadman	Laura Van Vuuren
Chris and Kiernan Patusky	Ann Richardson	Barnabas Schwanke	Robert Steere	Deborah Vandegrift
Betsy Payne	Pamela Richardson	Peter Schweitzer	Laura Stefanelli	Christine Vандoros
Susan Payne	Harvey Richardson	Lorna Scott	Maggie Steinhilper	Conrad and Doreen Varblow
Lisa Payne	Danielle Rigley	Heather Scott	Chris Stephenson	Heidi Varblow
Jamie Pearson	John and Joan Rippingale	Alison Seaborn	Jeffrey Stern	Benjamin and Jessica Varg
Alyssa Pennington	Mirian Rivas	Juli Seaman	John Stevens	Casey Veatch III
Sunil Pentapati	Kenzie and Fiona Rivenbark	Thomas Seaquist	Marian Stiffler	Daniel Velez-Rivera
Mardoqueo Perdomo	Kelly Roberts	Nathan Segal	Natasha Stith	Robert Vernail
Bismarck Perez	Brenda Roberts	Clark Seipt	Nina Stively	Debbie Vespstad
Darla Perpall	Sierra Roberts	John and Jennifer Selman	Carole Stizza	Kara Vessey
Nicole Hawes Perry	Rachel Roberts	DeLisa Selwitz	Stephanie Stolte	Trisha Victor
Linda Perry	Tracy Roberts	Blair Semple	Cynthia Stone	Kavita Vijayan
Barbara Peters	Ann-Charlotte Robinson	Anne Senft	Rae Stone	Rachel Virk
Eugene and Holly Peterson	David A. and Allison Robison	Michele Senglaub	Clint Street	Samantha Vish
Shannon Petorak	Jessica Robles	Kelly Senser	Leslie Stutzman-Solitario	Laura Vukson
Kent A. and Martha Petrie	John Rodas	Paula D. Serola	Suhas Subramanyam	Richard Wacker
Robert Pettit and Alexandra Wilson	Holly Rodgers	Cindy Setien	Ying Sui	William, Melissa and Jack Wacker
Kathy Petz	Briseida and Berl Jones Jr.	Tyler Settle	Catherine Sullivan	William Wacker
		Alexa Severo	Julia Sullivan	

Lucky Wadehra*
 Chad and Kimberly Wagner
 Nanette Wahdan
 Michael and Stephanie Wal
 Jessica Walker
 Bette Walker
 Carolyn Walsh
 Helaine Walsh
 Iva Ward
 Patty Waschitzki
 Judy Washburn
 Ginger Wassum
 Barbara Wayne
 Hughes and Susan* Webb
 Jennifer Webber
 Jeanne Weber
 Rebecca Weber
 Lynn Webster
 Harvey Wechsler

Peter Weeks
 L Weeks
 Toby Weir-Jones
 Brian Weiss
 Michelle Weller
 Erin Welty
 Joe Westcott
 Rachel Wetherill
 Molly Whalen
 Elizabeth Wheatley
 Michael and Teresa Wheeler
 George Whitbeck
 Elijah and Anita White
 Jim and Tracey* White
 Pam White
 Bobbi White
 Gary White
 Meredith White
 Patty White

Theresa White
 Doug Whitman
 Nicole Wigen
 Ameer Wiggins
 Jennifer Wiggins
 Shea Wilch
 Helen Wiley
 William Wilkin
 Mary Polsley Williams
 Catherine Williams
 Brenda Williams
 Daniela Williams
 Michelle Williams
 Darlene Williamson
 Kendall Williamson
 Robert Willson
 Deborah Wilson
 Wendy Wilson
 Andrea Winkle

Chris Winkle
 Nickole Winnett
 Geralyn Winters
 Patricia Wirth
 Emma Witham
 Kelly Wods
 Darcy Woessner
 Hannah Wolf
 John H. and Lisa Wolff
 Nancy Wolford
 Steve Wolfson
 Darren Wolne
 Marci Womack
 Jack Wood
 Hope Woodward
 Christian Wooldridge
 Melanie Worrall
 Rosalyn Wright
 Margaret Wright

Traci Wrobel
 Todd Wyborney
 James Wynn
 Jennifer Yaw
 Amelia Yee
 Rachel York
 Laurie Young
 Brenda Young
 Shelley Zafran
 Zarixia Zavala-Ruiz
 Michelle Zebrowski
 David and Kathleen Zeiler
 Heather Zivkovich

**Denotes current or
 immediate past board
 or committee member*

2018 Corporate, Foundation, and Organizational Funders

Access National Bank
 AHT Insurance
 Akin, Gump, Strauss, Hauer
 Alpha Graphics Loudoun
 Amazon Smiles
 America's Charities
 ARC of Loudoun
 ARM Consulting LLC
 Arts for All VSA
 Bank of America Charitable Gift Fund
 Bank of American Matching Gift Program
 Benevity Community Impact
 Beta Burger/Burger 21
 Blue Ridge Middle School
 Blue Ridge Veterinary Associates
 Brambleton Group LLC
 Bridle Paths
 Broad Run High School
 Capital One Services, LLC
 Carter's Care
 Catocin Creek Distillery
 Charles Schwab Commercial
 Charming Charlie
 Claude Moore Charitable Foundation
 Commonwealth of Virginia
 Community Foundation for Northern Virginia
 Comstock for Congress
 Congregation Etz Chaim of Dupage County
 County of Loudoun, Virginia
 Creighton's Corner Elementary School
 Crossroads Jobs, Inc.
 CustomInk LLC
 Donate Well
 Dulles Golf Center & Sport
 Dunhill Frozen Dessert Co
 Embrace Home Loans Inc.
 Erdle Foundation
 Eventbrite
 Fabbioni Cellars
 Facebook
 Federal Agricultural Mortgage
 Fidelity Charitable
 First Citizens Bank and Trust
 Five Stones Healing Arts

Friends of the Blue Ridge
 George C. Marshall Intern
 Giant Food LLC
 Giving Assistant
 Greater Washington Community Foundation
 INOVA Health System
 Institute of Performing Arts
 Integrative Functional Medicine Center
 Integrus Holdings/Fortessa
 John Marshall Bank
 JP Events & Consulting
 K2M
 Kaiser Permanente Foundation
 Kendra Scott
 Kettermans Jewelers, Inc.
 Latin Viking Entertainment
 Leesburg Veterinary Services/Towne Animal Clinic
 Leesburg Veterinary Specialist
 Leigh Shields & Associates
 Long & Foster Chantilly
 Loudoun Abused Women's Shelter
 Loudoun Cares
 Loudoun Country Day School
 Loudoun County Chamber of Commerce
 Loudoun Free Clinic
 Loudoun Habitat for Humanity
 Loudoun Human Services Network
 Loudoun Insurance Group
 Loudoun Literacy Council
 Loudoun Youth
 Madison Wealth Management
 McCandlish & Lillard P.C.
 McGraw Foundation
 Meyers Appraisal Service
 Mitchell & Co., P.C. CPA
 Mobile Hope Association
 Morgan Stanley Cybergrant
 MPS Processing Settlement
 Nader Family Foundation
 National Sports Medicine
 Network for Good
 New York Community Trust
 NOVA Medical and Urgent Care
 NOVEC

O'Shaughnessy Hurst Memorial Foundation
 OAR
 Old Ox Brewery
 One Hour Heating and Air
 Pactolus
 PATH Foundation
 Peter Knapp Realty Group LLC
 Primrose School of Ashburn
 Prosperity Home Mortgage
 Raymond James Global
 Regions
 Reston Limousine
 RGS Title, LLC
 Ritenour Paice Mougin-Boa
 Rotary Club of Leesburg
 Sandy Spring Bank
 Frederick D. and Karen G. Schaufeld Family
 Foundation
 Sevilla, Saunders, Huddles
 Virts Miller Foundation
 Sheehy Auto Stores
 Sheila C. Johnson Foundation
 Sprout Therapeutic Riding & Education Center
 Sterling Restaurant Supplies
 Stone Tower Winery
 StoneSprings Hospital Center
 TD Ameritrade
 Telos Corporation
 Benevity Community Impact Fund
 The Marketing Management Group
 Henry Stowers Trust
 The Wyatt Foundation
 Toth Financial Advisory Corporation
 Truist
 United Charitable Foundation
 Walsh, Colucci, Lubeley, Emrich & Walsh, PC
 Washington Customhouse Brokers
 Waterford Foundation
 Wells Fargo Foundation
 Wineinger and Associates, Limited
 Yield Bookkeeping Service
 YMCA Loudoun County
 Your Cause LLC
 Zed Consulting Services

*Please accept our apologies for any listing omitted or incorrectly stated.
 We make every effort to accurately reflect our donors. If you find an
 error, please contact us so we may correct our records.*

2018 Grantmaking

Culture

Buchanan Hall, Upperville, VA—\$1,550 Support for concert series (Frederick L. Spencer, Jr. Memorial Fund)

George C. Marshall International Center, Inc, Leesburg, VA—\$47,000 General support (May Family Foundation)

Loudoun Freedom Center, Leesburg, VA—\$1,000 Support of historic preservation of the Belmont Cemetery for the Enslaved (Peter M. Howard Memorial Fund)

Loudoun Museum, Leesburg, VA—\$352 General support (Give Choose)

Mosby Heritage Area Association, Middleburg, VA—\$1,450 General support (Don and Amy Owen Charitable Fund and Peter M. Howard Memorial Fund)

The Plains Community League, The Plains, VA—\$1,600 General support (John Page Turner Community House Fund)

Webber Jazz Grantmaking Fund, Leesburg, VA—\$578 General support (Give Choose)

WAMU, Washington, DC—\$100 General support (Don and Amy Owen Charitable Fund)

Waterford Concert Series, Waterford, VA—\$530 General support (Gollobin Family Fund)

Waterford Foundation, Waterford, VA—\$3,878 General support (Benefit Live, Charles Tiffany Richardson Family Fund, Give Choose)

Education

Children's Science Center, Fairfax, VA—\$11,100 To expand Family Science Night to additional Title I schools and general support (100WomenStrong, Loudoun Chamber Foundation, Loudoun Impact Fund, Give Choose)

Embark Center for Self-Directed Education, Leesburg, VA—\$1,830 General support (Give Choose)

Higher Orbits, Leesburg, VA—\$115 General support (Give Choose)

The Hill School, Middleburg, VA—\$3,025 General support (The Hill School Endowment Fund)

Journey Through Hallowed Ground, Waterford, VA—\$524 General support (Give Choose)

Loudoun County Chamber of Commerce, Lansdowne, VA—\$10,000 Support for YEA! Young Entrepreneurs Program (Loudoun Chamber Foundation)

Loudoun Education Foundation, Ashburn, VA—\$70,441 Support for YMCA aftercare school partnership, support for Community School Initiative at Sterling Elementary School and annual science fair program (100WomenStrong and Willowcroft Science Endowment Fund)

Loudoun Library Foundation, Leesburg, VA—\$120 General support (Give Choose)

Loudoun Literacy Council, Leesburg, VA—\$14,534 General support (Benefit Live, Give Choose, Loudoun Chamber Foundation, Loudoun Impact Fund)

Middleburg Montessori School, Middleburg, VA—\$250 General support (Give Choose)

Piedmont Epicurean And Agricultural Center, Leesburg, VA—\$9,600 Support for paid administrator for "School Without Walls" program at The New Ag School (100WomenStrong)

Rock Ridge High School, Ashburn, VA—\$500 Support for TED-ED Talk program equipment (S. Murray Rust and Mary H.C. Rust Student Philanthropy Project/Forward Turn)



University of Virginia, Charlottesville, VA, to benefit student Danning Bisaga, Leesburg, VA—\$5,000 scholarship to benefit this graduate of Loudoun County High School, Leesburg (Loudoun County High School Scholarship Fund)



University of Virginia, Charlottesville, VA, to benefit student Jamie Lee, South Riding, VA—\$2,000 scholarship to benefit this graduate of Freedom High School, South Riding (Gavin Rupp "I Promise" Scholarship Fund)



Wakefield School, The Plains, VA—\$3,575 General support (Give Choose)

Washington Regional Association of Grantmakers, Washington, DC—\$100 General support (Don and Amy Owen Charitable Fund)

Human Services

100WomenStrong, Leesburg, VA—\$20,000 Grantmaking and endowment (Wheeler Family Foundation and Three Mustard Seeds)

A Farm Less Ordinary, Bluemont, VA—\$27,337 To provide training and employment to adults with special needs so they can develop a skillset in the food/farm industry, greenhouse construction, and general support (100WomenStrong, Give Choose, Loudoun Impact Fund)

A Place to Be, Middleburg, VA—\$125,978 To support salary for an additional music therapist and to initiate homebound music therapy program, to provide music therapy specialist to serve youth in residential shelters, and general support (100WomenStrong, Give Choose, Loudoun Impact Fund, Wheeler Family Foundation)

Ability Fitness, Leesburg, VA—\$8,000 To purchase a NuStep recumbent cross-trainer (100WomenStrong)

All Ages Read Together, Leesburg, VA—\$103,747 Support for existing class at Sterling Library and for creation of an inclusive classroom partnership with Loudoun County Public

Schools Early Childhood Education, to support school readiness classes for children ages four and five, and general support (100WomenStrong, All Ages Read Together Endowment Fund, Give Choose, Loudoun Impact Fund)

The ARC of Loudoun, Leesburg, VA—\$13,156 Support for ALLY - A Life Like Yours educational series, Loudoun Chamber Young Executive Leadership Award grants in honor of Todd Pearson and Nonprofit Executive Awardee Melissa Heifetz, and general support (100WomenStrong, Benefit Live, Gifts for Good, Give Choose, Operating Fund)

Ashburn Volunteer Fire and Rescue Department, Ashburn, VA—\$1,019 General support (Give Choose)

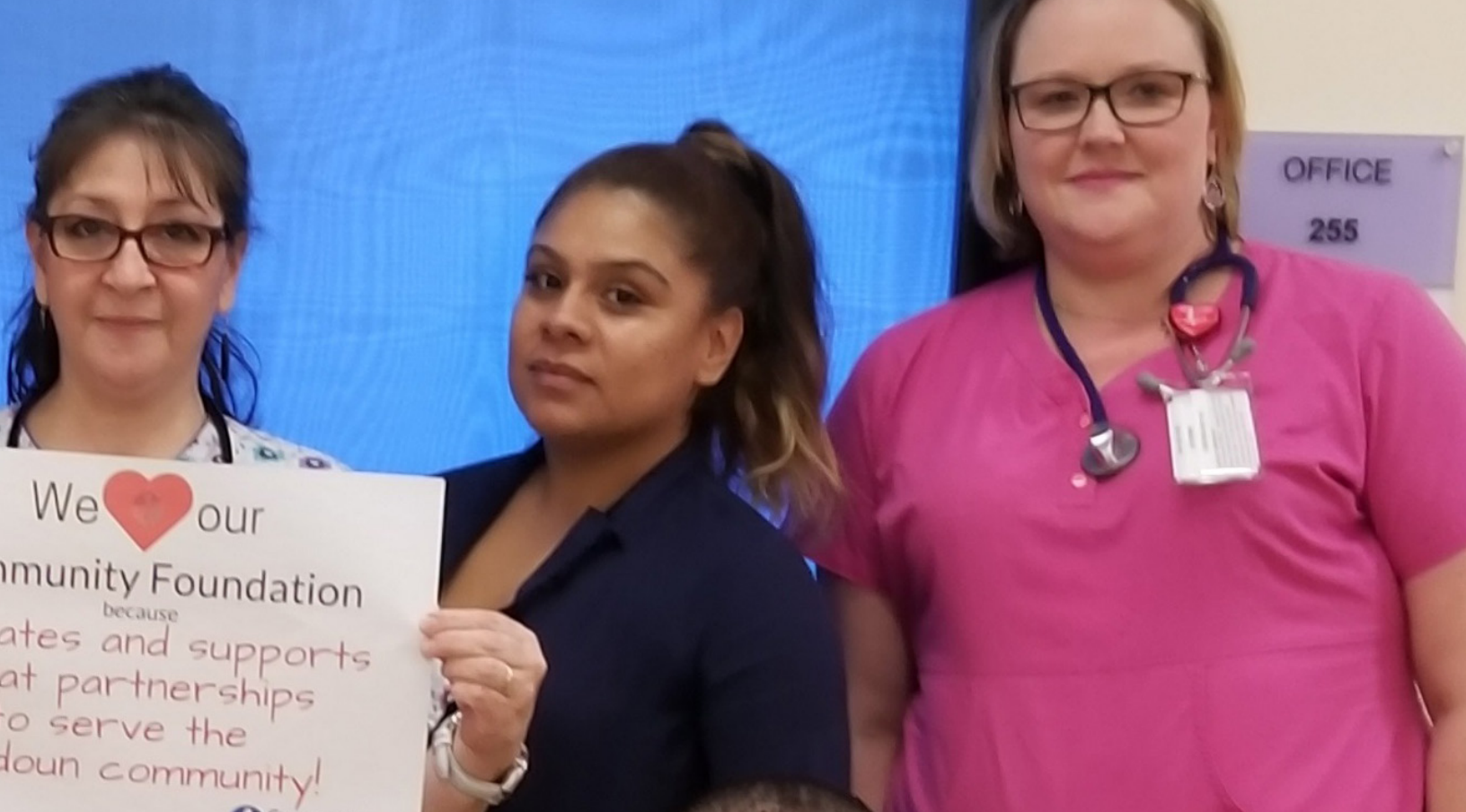
Birthright of Loudoun County, Leesburg, VA—\$8,130 General support (Give Choose)

Bringing Resources to Aid Women's Shelters BRAWS, Vienna, VA—\$140 General support (Give Choose)

Bridle Paths, McLean, VA—\$3,857 General support (Benefit Live, Give Choose)

Catholic Charities of the Diocese of Arlington, Arlington, VA—\$10,000 To purchase a double door for efficient and safe delivery of food in Leesburg Facility (100WomenStrong)

Children's Hospital Foundation, Silver Spring, MD—\$10,000 Support for DIPG Round Table (Smashing Walnuts)
Community Foundation for Loudoun and Northern Fauquier Counties, Leesburg, VA—\$17,246 General support,



Social Impact Institute Leadership Development program, *Profiles of Loudoun* research publication (100WomenStrong, Don and Amy Owen Charitable Fund, Give Choose)

Crossroads Jobs, Inc., Leesburg, VA—\$8,578 To support job counseling for people with disabilities, general support (Benefit Live, Gifts for Good, Give Choose, Loudoun Impact Fund)

Dulles South Food Pantry, Dulles, VA—\$10,487 Support for the construction of missing sidewalk link, to increase hours of part-time operations staff and general support (100WomenStrong, Gifts for Good, Give Choose)

ECHO, Leesburg, VA—\$35,553 To launch new ECHO Training Academy, to create a sensory room for ECHO clients, and general support (100WomenStrong, Give Choose, Loudoun Chamber Foundation, Loudoun Impact Fund, Three Mustard Seeds)

Endowment for the Community of the Community Foundation for Loudoun and Northern Fauquier Counties, Leesburg, VA—\$800 Endowment (Give Choose)

Emmanuel Episcopal Church, Middleburg, VA—\$1,000 General Support (Jim and Betty Herbert Family Fund)

EveryMind, Inc., Rockville, VA—\$5,000 To support Loudoun County's Serving Together program (100WomenStrong)

Fauquier Free Clinic, Warrenton, VA—\$1,000 General support (Jim and Betty Herbert Family Fund)

Fenwick Foundation, Arlington, VA—\$17,500 Support for ADAPT Dental care program for low-income older adults in

Loudoun County, to launch a Loudoun-based dental care for low-income older adults and adults with disabilities through mobile dentistry program (100WomenStrong and Loudoun Impact Fund)

Five Stones Healing Arts and Wellness Center, Leesburg, VA—\$11,668 To support mindfulness training to the children in the afterschool program at INMED and during summer camp sessions, to train program staff, and general support (100WomenStrong, Give Choose, Wheeler Family Foundation)

Friends of Loudoun Mental Health, Leesburg, VA—\$10,189 To provide 24 months of housing subsidies for A Place to Call Home and general support (100WomenStrong, Gifts for Good, Give Choose, Don and Amy Owen Charitable Fund)

Girls on the Run of NOVA, Fairfax, VA—\$674 General support (Give Choose)

Good Shepherd Alliance, Leesburg, VA—\$7,531 General support, funding for Six-Steps to Self-Sufficiency Housing Program for homeless families in shelter (Benefit Live and Three Mustard Seeds)

HealthWorks for Northern Virginia, Leesburg, VA—\$29,879 Support for 2nd year of Maternity Care Coordinator program and general support (100WomenStrong, Gifts for Good, Give Choose, Operating Fund)

Hero Homes, Hamilton, VA—\$863 General support (Give Choose)

Hire Our Heroes, Leesburg, VA—\$179 General support (Give Choose)

Humane Society of Loudoun County, Leesburg, VA—
\$8,926 General support (Give Choose)

INMED Partnership for Children, Sterling, VA—\$22,297 To support summer day camp for low-income elementary school children in Sterling, VA, support for after-school programs for low income children, and general support (100WomenStrong, Give Choose, Loudoun Impact Fund)

It Takes a Village Baby!, Leesburg, VA—\$2,090 General support (Benefit Live, Give Choose, S. Murray Rust and Mary H.C. Rust Student Philanthropy Project/Forward Turn)

Joy to the Kids, Ashburn, VA—\$5,635 General support (Give Choose)

Loudoun Abused Women's Shelter LAWS, Leesburg, VA—\$46,717 To enhance LAWS' legal services by updating equipment, expanding security systems, and obtaining expert witnesses, general support, funding for group services and recreational activities to child victims of domestic violence and sexual assault, and a grant in honor of Nicole Acosta (100WomenStrong, Benefit Live, Gifts for Good, Give Choose, Loudoun Impact Fund, Operating Fund)

Loudoun Cares, Leesburg, VA—\$660 General support (Benefit Live, Gifts for Good, Give Choose)

Loudoun County Commission on Women and Girls, Leesburg, VA—\$4,935 General support and Loudoun Chamber Community Leadership Award grant in honor of Inova Loudoun Hospital (Give Choose, Operating Fund)

Loudoun County Department of Family Services, Leesburg, VA—\$12,500 To benefit the Loudoun County Foster Care & Adoption programs including the Department's young adults' "Fostering Futures" program (J.T. Place Fund)

Loudoun County Juvenile Detention Center, Leesburg, VA—\$1,750 General support (Loudoun County Juvenile Detention Center Fund)

Loudoun Families for Children, Leesburg, VA—
\$2,064 General support (Give Choose)

Loudoun First Responders Foundation, Leesburg, VA—
\$100 General support (Operating Fund)

Loudoun Free Clinic, Leesburg, VA—\$4,522 General support, support for Mary B. Tett Scholarship (Benefit Live, Gifts for Good, Give Choose, Mary B. Tett Scholarship Fund)

Loudoun ENDependence, Leesburg, VA—\$650 General support (Sanders Oscanyan Memorial Fund)

Loudoun Human Services Network, Leesburg, VA—
\$1,132 General support (Gifts for Good, Operating Fund)

Loudoun Hunger Relief, Leesburg, VA—\$42,817 Support to

purchase a pallet lift for warehouse operations, support for the Senior Adult Food Service programs, and general support (100WomenStrong, Benefit Live, Gifts for Good, Give Choose, Loudoun Impact Fund)

Loudoun Therapeutic Riding Foundation, Leesburg, VA—
\$1,572 General support (Benefit Live, Give Choose)

Loudoun Volunteer Caregivers, Leesburg, VA—
\$23,817 Support for food delivery program, to support services to older adults and adults with disabilities, support for Student Caregiver Program, and general support (100WomenStrong, Gifts for Good, Give Choose, Loudoun Chamber Foundation, Loudoun Impact Fund, S. Murray Rust and Mary H.C. Rust Student Philanthropy Project/Forward Turn Program, Three Mustard Seeds)

Legacy Farms Virginia, Leesburg, VA—\$865 General support (Give Choose)

Loudoun County Human Services Strategic Planning initiative, Leesburg, VA—\$12,000 Facilitation services (Endowment for the Community, Three Mustard Seeds, May Family Foundation)

Loudoun Chamber Foundation, Leesburg, VA—
\$6,132 Endowment and community grantmaking, Loudoun Chamber Community Leadership Award grant in honor of Small Organization Awardee Integrus Holdings and Executive Leader Awardee Scott Hamberger (Give Choose, Operations Fund)

Loudoun Impact Fund of the Community Foundation for Loudoun and Northern Fauquier Counties, Leesburg, VA—
\$1,000 Community grantmaking (Wheeler Family Foundation)

Loudoun Youth, Leesburg, VA—\$5,184 General support (Benefit Live, Give Choose, Loudoun Chamber Foundation)

Middleburg FISH, Middleburg, VA—\$2,000 General support (Moses Fund)

Mobile Hope, Leesburg, VA—\$21,173 General support (Benefit Live, Gifts for Good, Give Choose, Wheeler Family Foundation)

Northern Virginia Family Services, Oakton, VA—
\$5,198 Support for Parenting for Resiliency Project and general support (100WomenStrong, Gifts for Good, Give Choose)

Northern Virginia Human Trafficking Initiative, Reston, VA—\$5,000 Create materials for human trafficking awareness and prevention (100WomenStrong)

OAR Opportunities Alternatives Resources, Leesburg, VA—\$4,013 General support (Benefit Live, Loudoun Chamber Foundation)

One Sparrow, Ashburn, VA—\$1,226 General support (Give Choose)

Piedmont Environmental Council, Warrenton, VA—
\$5,000 To start operations and volunteer programs at The Roundabout Meadows Community Farm for harvest and distribution of food to Loudoun residents in need (100WomenStrong)

Philomont Volunteer Fire Department, Philomont, VA—
\$250 General support (Don and Amy Owen Charitable Fund, Give Choose)

Project Horse Empowerment Center, Great Falls, VA—
\$3,268 General support (Give Choose)

Ride-On Ranch, Lovettsville, VA—\$5,684 General support (Give Choose)

Ryan Bartel Foundation, Waterford, VA—\$19,446 General support, Implementation of Sources of Strength youth suicide prevention program in partnership with Loudoun County Public Schools (Give Choose, Wheeler, Family Foundation, Loudoun Impact Fund)

SCAN of Northern Virginia, Alexandria, VA—\$5,000 Support to expand parent education initiatives to provide a series of Immigrant Parent Reunification workshops and add a Parenting Wisely Program (100WomenStrong)

Seven Loaves, Middleburg, VA—\$1,000 General support (Jim and Betty Herbert Family Fund)

Sprout Therapeutic Riding & Education Center, Aldie, VA—\$1,394 General support (Give Choose)

St. Gabriel's Episcopal Church, Leesburg, VA—
\$1,982 Spanish Language program (Give Choose)

Smashing Walnuts, Leesburg, VA—\$1,515 General support (Give Choose)

StoryBook Treasures, Ashburn, VA—\$5,000 To support literacy enrichment programs for low-income students, in partnership with Loudoun County Public Schools STEP preschool program (Loudoun Impact Fund)

The Step Sisters, Ashburn, VA—\$145 General support (Give Choose)

Volunteers of America Chesapeake, Leesburg, VA—
\$117 General support (Benefit Live, Give Choose)

Windy Hill Foundation, Middleburg, VA—\$31,198 Provide laptop computers to 10 underserved youth participating in NetWorks after school program at Blue Ridge Middle School and general support (100WomenStrong, Gifts for Good, Give Choose)

Women Giving Back, Sterling, VA—\$15,670 Support to purchase a LiftNStore Overhead Lift; investment in volunteer management software; other software and office equipment, and general support (100WomenStrong, Gifts for Good, Give Choose)

YMCA Loudoun County, Leesburg, VA—\$246 General support (Benefit Live, Gifts for Good, Give Choose)

Nature

Continental Divide Trail Coalition, Pine, CO—
\$1,000 General support (Don and Amy Owen Charitable Fund)

Friends of the Blue Ridge Mountains, Bluemont, VA—
\$2,840 General support (Charles Tiffany Richardson Family Fund and Give Choose)

Goose Creek Association, Middleburg, VA—\$1,000 General support (Peter M. Howard Memorial Fund)

Land Trust of Virginia, Middleburg, VA—\$500 General support (Charles Tiffany Richardson Family Fund)

Loudoun Community Cat Coalition, Leesburg, VA—
\$9,306 General support (Give Choose)

Loudoun Wildlife Conservancy, Leesburg, VA—
\$5,139 General support (Give Choose)

Vieques Conservation and Historical Trust, Vieques, PR—
\$100 General support (Don and Amy Owen Charitable Fund)



Life Does Not End When You *Flee* to Another Country



Nine years ago, my family and I fled Venezuela when a dictator took over. I was terrified for my wife and two young children. So, I abandoned a thriving law practice, and my children said goodbye to our family home. I could barely speak English. I had no job and nowhere to live. It was deeply humbling.

No family in Loudoun should have to rebuild their lives alone.

EndtheNeed.org

Real People. Hear their stories.
Unexpected Stories. Celebrate their victories.
Right Here in Loudoun. Learn how you can help.



Growing
Community Giving
for 20 Years

CommunityFoundationLF.org | (703) 779-3505
info@CommunityFoundationLF.org